



**PRODUCT
CATALOGUE
2024/2025**



**PROTECTED
FROM CAIRNS TO BROOME
AND BACK AGAIN!**

Complete Adventure Luggage Sets.

▶ MORE ON PAGE 26

PART OF YOUR RIDE. ALWAYS.

JOIN THOUSANDS OF OTHER AUSTRALIAN RIDERS WHO
CHOOSE TO RIDE WITH MORE SMARTS, COMFORT AND STYLE.
RIDE WITH SW-MOTECH.

Born from a passion for motorcycling.

Founded in 1999 by three enthusiastic motorcyclists, Jörg Diehl, Kai Jockel, Jürgen Swora, who realised the need for purpose built, highly functional luggage options to suit their motorcycling adventures.

Today SW-MOTECH is among the leading suppliers of motorcycle accessories worldwide and exports to over 70 countries. There are more than 400 bright minds behind the brand with the red bull.

At the headquarters in Rauschenberg, Germany and in another plant in the Czech Republic, everything revolves around first-class accessories for motorcycles. Well-known manufacturers like BMW, Ducati, Kawasaki, KTM, Moto Guzzi, Suzuki and Yamaha as well as motorcyclists all over the world trust the know-how in the development and production of original parts.

RPM
MOTO
www.rpmmoto.com.au

**MOTORCYCLES ARE
THE DNA OF
THIS COMPANY**



**1994
FOR A TOUR OF LIBYA
WITH JÖRG DIEHL, JÜRGEN SWORA
CONSTRUCTS A REAR TANK
FOR THE AFRICA TWIN (1993)**

CONTENTS

TANK BAGS

Tank Rings & Mounting	4
PRO Tank Bags	5
PRO Tank Bags WP	7
PRO Tank Bag Accessories	8
ION Tank Bags	9
Legend Gear Tank Bags	10

SOFT LUGGAGE

Drybags	11
Sysbag WP	12
PRO Tail Bags	13
PRO Tail Bag Accessories	15
ION Tail Bags	16
Legend Gear Tail Bags	17
Legend Gear Side Bags	18
Legend Gear Saddlebags	19
Legend Gear LH Side Bags	20

HARD LUGGAGE

Complete Luggage Sets	21
TRAX ADV Side Cases	24
TRAX Accessories	25
TRAX Toolbox	26
DUSC ABS Side / Top Cases	27
AERO ABS Side Cases	28
BLAZE Saddlebags	29
URBAN ABS Side Cases	30
TRAX Top Cases	31
URBAN ABS Top Cases	32

CARRIERS & RACKS

PRO Side Carriers	33
SLC + SLH Side Carriers	34
Adventure Rack	35
Street Rack	36
Seat Rack + ALU Rack	37
Rack Accessories	38
Brackets & Plates	39

BACKPACKS & GEAR BAGS

PRO Cosmo Backpack	40
Daily WP Backpack	41
Drybag 300 + Flexpack	42
Belt WP + Leg Bag WP	43
Legend Gear Bags	44
Luggage Accessories	45

SAFETY

Centerstands + Stand Extensions	46
Mirrors	47
Mirror Extensions	48
Lights	49

PROTECTION

Crash Bars	50
Engine Guards	51
Frame Sliders	52
Axle Sliders	53
Protection Parts	54

ERGONOMICS

Gear Levers	56
Brake Pedal + Pedal Extensions	57
Footrests	58
Variable Bar Backs	59
Bar Risers	60
Comfort Cushions	62

NAVIGATION + ELECTRICAL

GPS Holders	63
Universal Kits	64
Power Supply	65

MERCHANDISE

Clothing + Accessories	66
------------------------	----

TIP: Click **'heading'** above to jump to page.
Use **'Menu'** buttons to return to this page.

TANK RINGS & MOUNTING.



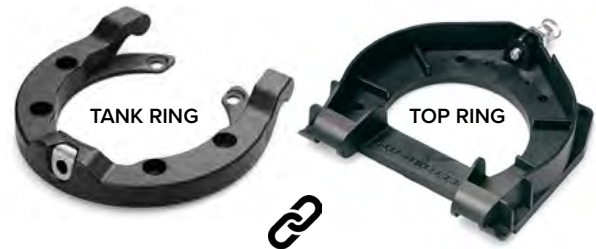
PRO TANK RINGS

Premium / Magnetic Guide Ring



ION TANK RINGS

Entry Level / Mechanical Ring



PRO TANK RING



The PRO tank ring combines a mechanical snap lock with patented magnet technology. Powerful guide magnets position the luggage perfectly, while a spring mechanism securely locks the upper ring with an audible snap. Red pull strap releases the quick fastener for removal. Designed for a precise fit!

ION TANK RING



The fiberglass-reinforced ION tank ring securely holds ION series tank bags, mounting them with a single click. A pull strap releases the quick fastener. The bike-specific design ensures easy mounting and a secure fit, even off-road.

PRO TOP RING

No drilling required. The top ring is pre-installed on the PRO Series Tank Bags and slides on a guide rail under the bag and locks into any position to fit the bike or rider. Easily switch the tank bag to another motorcycle by adjusting the ring's position.

ION TOP RING

The ION top ring is attached to the bottom of the ION tank bag. After installing the top ring, the tank bag can be quickly and easily clicked on to the tank ring. Top ring is included in every ION series bag.



LEGEND TANK BAGS

Stylish / Magnetic Pad



STRAP MOUNTING

Classic / Secure Mounting



STRONG MAGNETIC HOLD

Strong magnets keep the Legend Tank Bag secure to the tank on all terrain, while the smart base plate design allows easy release without excessive force.

CLASSIC AND SECURE.

Classic mounting straps with modern styling and features. Strap mounting options available across PRO, ION and LEGEND series tank bags.

PREMIUM / MAGNETIC GUIDE

PRO TANK BAG

The PRO Series combines timeless design with durable materials and smart features: ballistic nylon protects against shocks, wind, and weather, while laminated EVA ensures shape retention and secures new smartphone and tablet mounts via a MOLLE system.


MATERIALS:

- LAMINATED, DIMENSIONALLY STABLE EVA TOP AND BOTTOM.
- DURABLE, UV-RESISTANT 1680D BALLISTIC NYLON WITH WATER-RESISTANT COATING.

FUNCTIONALITY:

- EXPANDABLE VOLUME VIA ZIPPER.
- SECURE HOLD WITH PATENTED PRO TANK RING AND MAGNETIC GUIDE FOR EASY ALIGNMENT.
- PRE-ASSEMBLED TOP RING GUIDE RAIL FOR ERGONOMIC ADJUSTMENT.
- MOLLE ATTACHMENT FOR SMARTPHONE/TABLET HOLDERS.
- REFLECTIVE DETAILS FOR VISIBILITY.
- INTERIOR MESH COMPARTMENTS.
- RAIN COVER FOR WEATHER PROTECTION.
- STURDY CARRYING HANDLE.



PRO Tank Ring required.



PRO TANK BAG WP **WATERPROOF!**

“Is this tank bag 100% waterproof?” Is a question that has long haunted us. With the new PRO Waterproof “WP” Tank Bags, the answer is finally clear: **YES, IT’S 100% WATERPROOF!**


ADDITIONAL “WP” FEATURES:

- LAMINATED, DIMENSIONALLY STABLE EVA TOP AND BOTTOM.
- WELDED TPU PLASTIC BODY WITH NO SEAMS!
- OVERLAPPING LID PREVENTS WATER ENTRY.
- MAGNETICALLY SECURED OUTER LID.
- CLEAR INNER LID COMPARTMENT FOR SMARTPHONE OR MAPS.
- INNER POCKET WITH ELASTIC LOOPS AND COMPARTMENTS.



PREMIUM / MAGNETIC GUIDE

PRO TANK BAGS

FOR FLAT & CURVED MOTORCYCLE TANKS.

Flat-bottom PRO tank bags suit sport bikes, while curved tank bags fit dual-sport and touring bikes with sloping tanks. The guide rail allows precise positioning for a perfect fit.


PRO Micro

PN: SW-BCTRS0011030000
Volume: 3 - 5L
Size: 27 x 20.5 x 11 cm


PRO Daypack Magnetic

PN: SW-BCTRS0011130000
Volume: 6 - 9L
Size: 29 x 22.5 x 12.5 cm


PRO Daypack

PN: SW-BCTRS0010830000
Volume: 5 - 8L
Size: 29 x 22.5 x 12.5 cm


PRO Sport

PN: SW-BCTRS0010130000
Volume: 12 - 17L
Size: 39.5 x 31.5 x 16.5 cm


PRO City

PN: SW-BCTRS0010430000
Volume: 11 - 14L
Size: 37 x 29.5 x 25 cm


PRO Engage

PN: SW-BCTRS0010730000
Volume: 7 - 10L
Size: 35 x 26.5 x 20 cm


PRO Trial

PN: SW-BCTRS0010230000
Volume: 13 - 18L
Size: 37 x 31 x 24 cm


PRO GS

PN: SW-BCTRS0010330000
Volume: 16 - 20L
Size: 42 x 34 x 30 cm


PRO Enduro | Strap Tank Bag

PN: SW-BCTRS0011230000
Volume: 12 - 15L
Size: 35 x 31.5 x 20 cm

PREMIUM / MAGNETIC GUIDE / WATERPROOF

PRO TANK BAG WP

A WATERPROOF MODEL FOR ANY BIKE.

Whether flat or curved tank, attached with PRO Tank Ring or straps; there's a perfect fitting WP tank bag!



PRO Micro WP

PN: SW-BCWPB0002810000
Volume: 4L
Size: 26.9 x 19.9 x 13.3 cm



PRO Yukon WP

PN: SW-BCWPB0002210000
PN: SW-BCWPB0002211000 (ION Ring)
Volume: 6L
Size: 30 x 22 x 19 cm



PRO City WP

PN: SW-BCWPB0002410000
PN: SW-BCWPB0002411000 (ION Ring)
Volume: 9L
Size: 35.7 x 32.1 x 20.6 cm



PRO Cross WP

PN: SW-BCWPB0002510000
Volume: 5.5L
Size: 24 x 27 x 19.9 cm



PRO Enduro WP

PN: SW-BCWPB0002310000
Volume: 11L
Size: 43 x 25 x 23 cm

Have an ION tank ring but want a pro series bag?

Use the special edition of the Yukon WP or City WP with ION ring.




REAR SEAT RING

PRO Rear Seat Adaptor

The PRO Seat Ring allows you to attach a PRO tank ring to your passenger seat. That means you can enjoy the benefits of the PRO tank ring with its magnetic guide and extremely easy fastening system. Especially handy when it's not possible to attach a tank ring to the front of the tank.

Fits 4x PRO tank bags: Micro, Daypack, Sport and Yukon WP



PRO Rear Seat Ring

PN: SW-TRT0078721500-B

PREMIUM / ADD ONS

MOLLE SYSTEM

Every PRO tank bag has a MOLLE panel, allowing you to attach your choice of accessories.

What is MOLLE?

MOLLE (pronounced molly), stands for “modular, lightweight load-carrying equipment.” It was introduced to the military in the 1990s for soldiers to carry their gear around efficiently without compromising integrity.

How Does MOLLE Work?

Gear with MOLLE webbing (also known as PALS, or Pouch Attachment Ladder System) allow you to attach components to each other using a series of woven straps, creating an incredibly strong bond that doesn’t bounce or jostle while in motion and therefore won’t fail.

MOLLE webbing is made out of nylon for strength and durability and the best tactical backpacks have the MOLLE system built in.



SW-MOTECH has made use of this impressive level of flexibility and has added MOLLE extensions to the surface of soft luggage products. Smartphone and tablet holders, as well as additional bags, can be securely strapped to the robust grid pattern.



PRO TANK BAG ACCESSORIES

Compatible with MOLLE system found on PRO Tank bags and other SW-MOTECH Luggage.


PRO Pocket

PN: SW-BCTRS0015330000


Anti-theft System

PN: SW-TRT0064020001


Tablet Drybag

PN: SW-BCTRS0015230000



ENTRY LEVEL / MECHANICAL RING

ION TANK BAG

ION tank bags offer affordable, high-quality options with either a tank ring system or classic strap mounting. Ideal for budget-conscious riders, they feature a QUICK-LOCK function for easy attachment and removal. Top ring included in every bag.

**MATERIALS:**

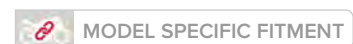
- DURABLE, UV-RESISTANT 600D POLYESTER WITH A WATER-RESISTANT LINING.
- EVA PLASTIC BASE AND PADDING FOR HIGH FORM STABILITY.

FUNCTIONALITY:

- INDIVIDUAL MOUNTING OF THE TOP RING FOR A PERFECT FIT.
- INTERIOR MESH COMPARTMENT.
- PULL STRAP FOR QUICK-LOCK RELEASE WITH SNAP FASTENER.
- PRACTICAL CARRYING HANDLE.



ION Tank Ring required.

**ION One Tank Bag**

PN: SW-BCTRS0020110001

Volume: 5 - 9L

Size: 30 x 21 x 15 cm

SOLID EVERYDAY PERFORMERS.

**WHY ION?**

The ION tank bag line is ideal for budget minded riders with high standards.

The ION one specifically provides a universal fit for almost any fuel tank!

STYLISH / MAGNETIC PAD

LEGEND TANK BAG



The Legend Gear line features retro style with leather and waxed canvas, delivering top performance without compromise. It's the perfect match for streetfighters, scramblers, naked sportbikes and café racers.



FEATURES:

- NO TANK RING REQUIRED! STRONG MAGNETS AND/OR STRAPS GIVE THESE TANK BAGS A SECURE HOLD IN ALL CONDITIONS.
- SOPHISTICATED BASE PLATE DESIGN ALLOWS RELEASE FROM THE TANK WITHOUT EXERTING EXCESSIVE FORCE.
- NAPALON SYNTHETIC LEATHER AND WAXED CANVAS WITH A WATER-RESISTANT INNER LINING.
- WATER-REPELLENT MATERIAL AND A WATERPROOF RAIN COVER WITH A CLEAR PVC WINDOW.
- STURDY CARRYING HANDLE.
- CABLE FEED-THROUGH ON THE FRONT.



CLASSIC STYLE.
MODERN FUNCTION.



Magnetic Tank Bag LT1

PN: SW-BCTRS0040110000

Volume: 3 - 5.5L

Size: 25 x 18 x 10 cm



**BLACK
EDITION**

Magnetic Tank Bag LT1

PN: SW-BCTRS0040110100

Volume: 3 - 5.5L

Size: 25 x 18 x 10 cm



Strap Tank Bag LT2

PN: SW-BCTRS0040210000

Volume: 5.5L

Size: 30 x 18 x 15 cm



PREMIUM / STRAP / WATERPROOF

DRYBAGS

Versatile waterproof bags for all adventures and conditions.

DETAILS:

- MADE OF DURABLE 500D POLYESTER WITH DOUBLE-SIDED COATING.
- UNIVERSAL FIT FOR ALMOST ALL MOTORCYCLES.
- SPECIFIC ALLOCATION OF THE BAG MODELS DEPENDING ON THE MOTORCYCLE MODEL.
- EASY TO COMBINE WITH OTHER DRYBAGS.
- PADDED HANDLE.
- D-RINGS ENABLE BAGS TO BE PULLED DOWN TIGHT ON THE MOTORCYCLE.
- INCLUDES 4 LOOP STRAPS AND 1 SHOULDER STRAP.
- REFLECTIVE DETAILS.


Drybag 80

PN: SW-BCWPB0001020000
Volume: 8L
Size: 19 x 9 x 35 cm


Drybag 180

PN: SW-BCWPB0001820000
Volume: 18L
Size: 39 x 25 x 18 cm


Drybag 260

PN: SW-BCWPB0002020000
Volume: 26L
Size: 50 x 26 x 26 cm


Drybag 300 Backpack

PN: SW-BCWPB0001120000
Volume: 30L
Size: 33 x 17 x 70 cm


Drybag 350

PN: SW-BCWPB0000120000
Volume: 35L
Size: 58 x 28 x 28 cm


Drybag 350 Signal Yellow

PN: SW-BCWPB0000120000-Y
Volume: 35L
Size: 58 x 28 x 28 cm



Drybag 600

PN: SW-BCWPB0000220000
 Volume: 60L
 Size: 71 x 33 x 33 cm



Drybag 600 Signal Yellow

PN: SW-BCWPB0000220000-Y
 Volume: 60L
 Size: 71 x 33 x 33 cm



Drybag 700

PN: SW-BCWPB0002120000
 Volume: 70L
 Size: 76 x 75 x 30 cm



Built tough to conquer

Australia's toughest conditions
 so you can *focus on the ride*
 and not your gear!

PREMIUM / WATERPROOF

SYSBAG WP

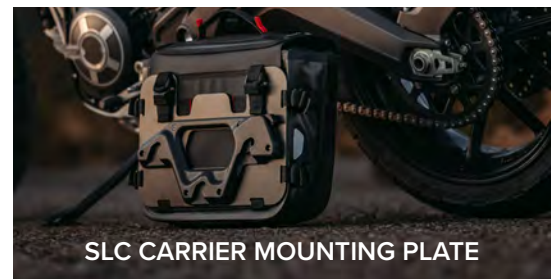
The completely waterproof SysBag WP models are available either individually, with left or right mounting plate or in a set that includes the model specific SLC or PRO side carrier.

MATERIAL

- MADE OF TPU MATERIAL.
- ROLL-TOP MADE OF 210 RIPSTOP TPU.

FUNCTION

- INDIVIDUAL BAGS CAN BE STRAPPED TO ANY THIRD-PARTY CARRIER.
- BAGS SEAMLESSLY ATTACH TO SLC OR PRO CARRIERS BY STRAPPING THE BAG TO A LEFT OR RIGHT SIDE MOUNTING PLATE.
- 100% WATERPROOF MAIN COMPARTMENT WITH ROLL-TOP CLOSURE.
- ONE WATERPROOF ZIPPERED COMPARTMENT ON THE INSIDE OF THE LID AND THE ADDITIONAL COMPARTMENT.
- FOUR PLASTIC FEET FOR IMPROVED STABILITY & BOTTOM PROTECTION.
- MOLLE PANEL FOR ATTACHMENT OF ACCESSORY BAGS.
- REINFORCED CARRYING HANDLES.
- REFLECTIVE DETAILS FOR INCREASED VISIBILITY.
- LASHING EYELETS FOR ATTACHING CABLE LOCKS.
- VELCRO STRAPS TO SECURE EXCESS STRAP LENGTH.
- SLC TO PRO CARRIER ADAPTER AVAILABLE (PN: SW-KFT0015236500)


SLC CARRIER MOUNTING PLATE


SysBag WP (S)

Bag: SW-BCSYS0000410000
 W/Left: SW-BCSYS0000412000L
 W/Right: SW-BCSYS0000412000R
 Volume: 12 - 16L
 Size: 32.5 x 16.5 x 33.0 cm
 Carrier: SLC Side Carrier



SysBag WP (M)

Bag: SW-BCSYS0000510000
 W/Left: SW-BCSYS0000512000L
 W/Right: SW-BCSYS0000512000R
 Volume: 17 - 23L
 Size: 32.5 x 16.5 x 41.0 cm
 Carrier: SLC Side Carrier



SysBag WP (L)

Bag: SW-BCSYS0000610000
 W/Left: SW-BCSYS0000612000L
 W/Right: SW-BCSYS0000612000R
 Volume: 27 - 40L
 Size: 48.0 x 22.0 x 41.0 cm
 Carrier: PRO Side Carrier

PREMIUM / STRAP

PRO TAIL BAGS

The tail bags from the PRO series are made of indestructible 1680 D Ballistic Nylon, which was originally designed for military use. They also boast high-quality workmanship and well thought-out features: reflective attachments ensure better visibility, robust lashing hooks secure the bags quickly and easily at the tail, and a MOLLE attachment on the top allows accessory bags to be attached.

The patented lashing hooks allow flexible attachment of the PRO tail bags. The straps are hooked and tensioned in one step.

MATERIAL

- MADE OF DURABLE AND HIGHLY UV-RESISTANT 1680D BALLISTIC NYLON WITH SPLASHPROOF INNER LINING.
- MOLLE ATTACHMENT MADE OF STABLE HYPALON MATERIAL ON THE UPPER SIDE FOR ATTACHING ACCESSORY BAGS.

FUNCTION

- UNIVERSAL FIT FOR ALMOST ALL MOTORCYCLES.
- ZIPPER MESH COMPARTMENT IN THE LID.
- ROBUST LASHING EYELETS FOR SECURE FASTENING OF THE BAG AT 4 POINTS AND FOR LASHING ACCESSORY BAGS.
- REFLECTIVE DETAILS FOR BETTER VISIBILITY
- ZIPPER MANAGEMENT: ELASTIC LOOPS PREVENT THE ZIPPER PULLS FROM FLUTTERING.
- MOLLE ATTACHMENT MADE OF STABLE HYPALON MATERIAL ON THE UPPER SIDE FOR ATTACHING ACCESSORY BAGS.
- SIMPLE AND QUICK ATTACHMENT OF THE BAG TO THE MOTORCYCLE WITH LOOP STRAPS WITH A PATENTED LASHING HOOK.
- WEATHER PROTECTION THANKS TO THE SUPPLIED WATERPROOF INNER BAG.
- STURDY CARRYING HANDLE.

PRO Base

PN: SW-BCHTA0030930000
Seat Holster with MOLLE patch.



Tail bags come in various sizes, from the compact Roadpack to the spacious Cargobag, with selected models fitting securely on the ADVENTURE-RACK and STREET-RACK. Installation instructions are available online.



MANY SHAPES AND SIZES

The PRO Roadpack suits sportbikes with small tails, the PRO Rearbag is ideal for commuting with space for a laptop, and the 42L PRO Rackpack is perfect for larger tours or rack mounting.



PRO Roadpack

PN: SW-BCHTA0030730000

Volume: 8 - 14L

Size: 36 x 28 x 15 cm



PRO Rearbag

PN: SW-BCHTA0030430000

Volume: 22 - 23L

Size: 40 x 43 x 25 cm



PRO Rackpack

PN: SW-BCHTA0030530000

Volume: 32 - 42L

Size: 33 x 56 x 26 cm

FLEXIBLE WITH LARGE LUGGAGE

These bags are ideal for travel without a rear carrier, offering ample storage, quick attachment, and compatibility with most rear racks or passenger seats. They also feature SW-MOTECH's signature design and attention to detail.

TIP: The PRO Rackpack can be securely attached to the rack extension.



PRO Cargobag

PN: SW-BCHTA0030630000

Volume: 50L

Size: 50 x 70 x 33 cm



PRO Travelbag

PN: SW-BCHTA0030130000

Volume: 65L

Size: 75 x 33.5 x 31 cm



PRO Tentbag

PN: SW-BCHTA0035030000

Volume: 18L

Size: 17 x 58 x 17 cm



PRO Plus Accessory Bag

PN: SW-BCHTA0030830000

Volume: 3 - 6L

Size: 28 x 21 x 7 cm



PRO Plus WP Bag

PN: SW-BCWPB0002710000

Weight: 0.3kg

Size: 16.5 x 7 x 18.5 cm

TIP: The PRO Tentbag, PRO Plus Accessory Bag and PRO Plus WP Bag attach to other bags via the MOLLE system or can be strapped down by themselves where applicable.

ENTRY LEVEL / STRAP

ION TAIL BAGS

Constructed of 600D polyester and soft vinyl, all three ION tail bags combine a subtle, sleek, no-nonsense design with useful features. Thoughtful storage organization, non-slip undersides, locking main zippers and included waterproof inner bags are handy for touring or commuting duties. Reflective piping appears dark during the day, but lights up at night for drivers.

FEATURES

- DURABLE, HIGHLY UV-RESISTANT 600D POLYESTER WITH WATER RESISTANT INTERIOR COATING.
- ATTRACTIVE WITH THE COMBINATION OF TEXTILE FABRIC MADE FROM POLYESTER WITH BLACK SOFT VINYL.
- NON-SLIP UNDERSIDE FOR IDEAL GRIP.
- REFLECTIVE DETAILS FOR MORE SAFETY IN TRAFFIC.


ION Tail Bag S

PN: SW-BCHTA0020110000
 Volume: 7 - 15L
 Size: 33 x 29 x 10 cm


ION Tail Bag M

PN: SW-BCHTA0020210000
 Volume: 26 - 36L
 Size: 30 x 44 x 30 cm


ION Tail Bag L

PN: SW-BCHTA0020310000
 Volume: 50L
 Size: 50 x 70 x 30 cm



LEGEND PREMIUM / STRAP

LEGEND TAIL BAGS

If you don't want to miss out on comfortable features, but prefer a more classic look, we recommend the tail bags from the Legend Gear series. High-quality materials such as waxed canvas and robust napalon synthetic leather perfectly underline the style of modern retro-classic motorcycles.

FEATURES:

- NAPALON SYNTHETIC LEATHER AND WAXED CANVAS, WATER-RESISTANT INNER LINING.
- UNIVERSAL FIT FOR SEAT AND TAIL RACK.
- ALSO SUITABLE FOR BIKES WITH HIGH-MOUNTED EXHAUST.
- SECURE HOLD THROUGH 4-POINT STRAP MOUNTING.


LR1 Legend Gear Tail/Backpack

PN: SW-BCHTA0040410000
Volume: 17.5L
Size: 30 x 17 x 40 cm


LR2 Legend Gear Tail Bag

PN: SW-BCHTA0040510000
Volume: 48L
Size: 45 x 68 x 30 cm



**BLACK
EDITION**

LR2 Legend Gear Tail Bag - Black

PN: SW-BCHTA0040510100
Volume: 48L
Size: 45 x 68 x 30 cm

ACCESSORIES: Compatible with most Legend Gear Bags. Securely attach with MOLLE system.


LA4 Shoulder Strap

STD: SW-BCTRS0040610000
BLK: SW-BCTRS0040610100


LA5 Tool Bag

PN: SW-BCTRS0040710000
Volume: 1.6L
Size: 24 x 11 x 7 cm


Bottle Holder LA6

PN: SW-BCTRS0040810000
Fits MOLLE System
Volume: 600ml

LEGEND PREMIUM / SLC CARRIER

LEGEND SIDE BAGS

The LC1/LC2 side bags combine classic looks with contemporary functionality. The bags can be easily mounted and removed from the SLC side carriers thanks to a quick-lock system.

Durable Napalon synthetic leather and waxed canvas fabric highlight the vintage design of the Legend Gear soft luggage. The standard colour that LC1/LC2 side bags are available in is the classic-looking two tone Black-Brown. Also available is the all-black, Black Edition.

FEATURES

- NAPALON SYNTHETIC LEATHER AND WAXED CANVAS, WATER RESISTANT INNER LINING.
- ONE OR TWO-SIDED MOUNT.
- BAGS ARE AVAILABLE WITH LEFT OR RIGHT MOUNTING, SMALL OR LARGE SIZE AND BROWN OR BLACK VARIANTS.
- QUICK LOCK SYSTEM MADE OF GLASS FIBER REINFORCED POLYAMIDE.
- ROLL CLOSURE AND WATERPROOF INNER BAG PROVIDE RAIN PROTECTION.


LC1 Legend Gear Side Bag

BROWN/BLACK L: SW-BCHTA0040110100L
 BROWN/BLACK R: SW-BCHTA0040110100R
 BLACK EDITION L: SW-BCHTA0040110200L
 BLACK EDITION R: SW-BCHTA0040110200R
 Volume: 9.8L
 Size: 31 x 14 x 26 cm
 Carrier: SLC Carrier


LC2 Legend Gear Side Bag

BROWN/BLACK L: SW-BCHTA0040210100L
 BROWN/BLACK R: SW-BCHTA0040210100R
 BLACK EDITION L: SW-BCHTA0040210200L
 BLACK EDITION R: SW-BCHTA0040210200R
 Volume: 13.5L
 Size: 31 x 14 x 35 cm
 Carrier: SLC Carrier

LEGEND PREMIUM / SADDLE STRAP

LEGEND SADDLEBAGS

Saddlebag LS1 / LS2

These elegant bags can be easily attached to the SLS saddle strap and impress with their exceptional design. The SLS saddle strap loops under the seat and provides secure grip for the LS1/LS2 saddlebags on straight bench saddles with a passenger seat.


FEATURES

- NAPALON SYNTHETIC LEATHER AND WAXED CANVAS, WATER RESISTANT INNER LINING.
- HOLDING STRAPS AND SAFETY STRAPS WITH ALUMINIUM HOOKS ENABLE SECURE AND FLEXIBLE FASTENING TO THE SLS SADDLEBAG HOLDER.
- CONVERTS TO A VERY PRACTICAL MESSENGER-STYLE SHOULDER BAG IN COMBINATION WITH THE LA4 SHOULDER STRAP.
- WATERPROOF INNER BAG INCLUDED IN DELIVERY.


LS1 Saddlebag

PN: SW-BCHTA0040110000

Volume: 9.8L

Size: 31 x 14 x 26 cm


LS2 Saddlebag

PN: SW-BCHTA0040210000

Volume: 13.5L

Size: 31 x 14 x 35 cm


SLS Saddle Strap

PN: SW-BCHTA0040310000


Saddlebag LS1 Set.

PN: SW-BCHTA0040320000

Includes:

2x Legend Gear LS1 Saddlebags

1x Legend Gear Saddle Strap


Saddlebag LS2 Set

PN: SW-BCHTA0040320100

Includes:

2x Legend Gear LS2 Saddlebags

1x Legend Gear Saddle Strap


LS1 & LS2 Saddlebag Set

PN: SW-BCHTA0040320200

Includes:

1x Legend Gear LS1 Saddlebag

1x Legend Gear LS2 Saddlebag

1x Legend Gear Saddle Strap

LEGEND PREMIUM / SLH CARRIER

LEGEND LH SIDE BAGS

The LH Side Bags combine the light weight of a saddlebag with the high form stability of a suitcase. Classic Legend Gear look is combined with high-tech materials and a modern fastening system.

MATERIAL

- ROBUST & EASY TO CLEAN: MADE OF WEATHER AND UV RESISTANT 600D POLYESTER AND GRAINED FAUX LEATHER.
- EXCELLENT HIGH FORM STABILITY DUE TO ABS PLASTIC REINFORCED WALLS AND LID.

FUNCTION

- INDIVIDUAL BAGS MOUNT TO MODEL SPECIFIC SLH CARRIER.
- MODEL SPECIFIC SETS AVAILABLE.
- GENEROUS STORAGE SPACE WITH INTEGRATED ANTI-THEFT PROTECTION INSIDE THE BAG. ADDITIONAL THEFT PROTECTION THROUGH LOCKABLE LID.
- BAG HANDLE ALLOWS COMFORTABLE CARRYING.



The bags can be attached to the fender brace via an integrated locking mechanism on the model specific SLH Side Carrier with a turn of the lever. When riding without luggage, only a small, inconspicuous bracket is visible on the bike.


LH1 Legend Gear Side Bag (L)

PN: SW-BCHTA0068211100
Volume: 19.5L
Size: 42 x 24 x 28 cm
Carrier: SLH Carrier

LH1 Legend Gear Side Bag (R)

PN: SW-BCHTA0068211000
Volume: 19.5L
Size: 42 x 24 x 28 cm
Carrier: SLH Carrier

LH2 Legend Gear Side Bag (L)

PN: SW-BCHTA0068210000
Volume: 25.5L
Size: 47 x 24 x 39 cm
Carrier: SLH Carrier

MODEL SPECIFIC ADVENTURE SETS

The all-in-one solution. For maximum convenience, SW-MOTECH offers complete Adventure Set Luggage with a full assortment of model specific parts and accessories under one part number.

Consisting of two side cases and two side carriers, a top case and a rack as well as additional accessories is an all-round carefree package for every tour.

The whole, attractive package is rounded out with additional accessories, such as a lock set, TRAX accessory bags, a multi-tool and the adapters needed for mounting.



EXAMPLE BIKE: DUCATI DESERT X

Model specific fitment

The Adventure set luggage for the Ducati DesertX includes the PRO side carriers and matching ADVENTURE-RACK. Carrier and rack are fastened to the bike-specific attachment points and offer sturdy support for the TRAX ADV aluminium cases.



INCLUDED IN DELIVERY:

- 1 x TRAX ADV Top case, black, 38 L
- 1 x TRAX ADV L Aluminium case, black, 45 L, left side
- 1 x TRAX ADV M Aluminium case, black, 37 L, right side
- 2 x PRO Side carrier
- 2 x Adapter kit for PRO side carrier
- 2 x TRAX lock set with PRO anti-theft protection
- 1 x ADVENTURE-RACK
- 1 x Adapter kit for ADVENTURE-RACK
- 3 x TRAX lock set
- 2 x TRAX WP M/L accessory bag
- 6 x lid limiter
- 3 x Storage bags
- 1 x Multi-tool key chain attachment
- Mounting instructions
- Mounting material

PART #: SW-ADV2299575000-B



MODEL SPECIFIC LUGGAGE SETS



Model specific products are available across the entire range. These products feature a unique part number and include the luggage as well as all required carriers/racks, adapters and mounting kits, with any additionally required products for perfect out-of-the-box fitment.

SYSBAG SET



EXAMPLE: Yamaha Tenere 700

PART #: SW-BCSYS0679921000-B

INCLUDES:

- 2 x PRO Side carrier,
- 2 x Adapter kit for SysBag WP,
- 1 x Adapter plate left for SysBag WP L
- 1 x Right adapter plate for SysBag WP L
- 2 x SysBag WP L
- Mounting instructions
- Mounting material

DUSC SIDE SET



EXAMPLE: Ducati DesertX

PART #: SW-KFT2299565000-B

INCLUDES:

- 2 x PRO Side carrier
- 2 x DUSC Adapter kit for PRO side carrier.
- 1 x DUSC M hard case
- 1 x DUSC L hard case
- 1 x Hard case lock set
- 1 x Multi-tool key chain attachment
- Mounting instructions
- Mounting material

BLAZE SET



EXAMPLE: Honda CB650R

PART #: SW-BCHTA0174036500

INCLUDES:

- 2 x Saddlebags PRO BLAZE H
- 2 x BLAZE Removable support arms
- 2 x Edge protection for saddlebags
- 2 x Waterproof inner bags
- 1 x Paint protection film
- Mounting instructions
- Mounting material

AERO ABS SET



EXAMPLE: Suzuki V-Strom 650

PART #: SW-KFT0587660101-B

INCLUDES:

- 2 x AERO ABS side case
- 2 x Waterproof inner pockets
- 2 x Motorcycle bag locks
- 2 x PRO Side carrier
- 2 x Adapter kit for PRO side carrier
- 2 x Anti-theft for PRO side carriers
- Mounting instructions
- Mounting material

URBAN SIDE SET



EXAMPLE: Yamaha MT-09

PART #: SW-BCHTA0686130000-B

INCLUDES:

- 1 x SLC Side carrier Left
- 1 x SLC Side carrier right
- 1 x URBAN ABS Side case left,
- 1 x URBAN ABS Side case right
- 2 x Waterproof inner pockets
- 2 x Motorcycle bag locks
- Mounting instructions
- Mounting material

TRAX SIDE SET



EXAMPLE: Honda Africa Twin

PART #: SW-KFT0195070001-B

INCLUDES:

- 1 x TRAX ADV L Aluminium case, left
- 1 x TRAX ADV M Aluminium case, right
- 2 x PRO Side carrier
- 2 x Adapter kit for PRO side carrier
- 1 x TRAX lock set with PRO anti-theft
- 1 x Multi-tool key chain attachment
- Mounting instructions
- Mounting material

MODEL SPECIFIC LUGGAGE SETS



TRAX TOP SET



EXAMPLE: KTM 1090 Adventure

PART #: SW-GPT0479070003-B

INCLUDES:

- 1 x TRAX ADV Top case, black
- 1 x ADVENTURE-RACK, black
- 1 x Adapter kit for ADVENTURE-RACK
- 1 x TRAX lock set
- 1 x Storage bag
- 2 x Lid limiter
- Mounting instructions
- Mounting material

DUSC TOP SET



EXAMPLE: BMW F900 GS

PART #: SW-GPT0760265000-B

INCLUDES:

- 1 x DUSC L hard case
- 1 x STREET-RACK, black
- 1 x Hard case lock set
- 2 x Lid limiter
- Mounting instructions
- Mounting material

URBAN TOP SET



EXAMPLE: CF Moto 800MT

PART #: SW-GPT1003260000-B

INCLUDES:

- 1 x ADVENTURE-RACK
- 1 x URBAN ABS Top case
- 1 x DHV system for STREET-RACK
- 1 x Waterproof inner bag
- 1 x Lock for motorcycle luggage
- Mounting instructions
- Mounting material

RACKPACK SET



EXAMPLE: Ducati Multistrada V4

PART #: SW-GPT2282230000

INCLUDES:

- 1 x ADVENTURE-RACK
- 1 x Luggage rack extension for ADVENTURE-RACK
- 1 x PRO Rackpack tail bag
- Mounting instructions
- Mounting material

LEGEND LH SET



EXAMPLE: BMW R18

PART #: SW-BCHTA0768220000

INCLUDES:

- 1 x Legend Gear LH1 side bag left
- 1 x Legend Gear LH1 side bag right
- 1 x SLH Side carrier LH1 left
- 1 x SLH Side carrier LH1 right
- 1 x Legend Gear lock set
- Mounting instructions
- Mounting material

LEGEND LC SET



EXAMPLE: Harley Nightster

PART #: SW-BCHTA1809620000

INCLUDES:

- 1 x Legend Gear Side bag LC2 left
- 1 x Legend Gear Side bag LC2 right
- 2 x Waterproof inner bags
- 1 x SLC Side carrier left
- 1 x SLC Side carrier right
- Mounting instructions
- Mounting material

PREMIUM / PRO CARRIER

TRAX ADV SIDE CASES


A touring case without compromise:

Strength, protection from the elements and ease of use were the focus of the TRAX ADV case development. Practical carrying handles, a completely removable lid, glass fiber reinforced plastic corner caps and a large chamfer for cornering clearance are just some of the smart features.

MATERIAL

- STURDY AND WATERTIGHT SIDE CASE MADE FROM ALUMINIUM.
- PROTECTION AGAINST OXIDATION AND ABRASION WITH POWDER COATING (BLACK) OR ANODISING (SILVER)

FUNCTION

- LARGE CUTAWAYS ON OUTER CORNERS FOR PLENTY OF GROUND CLEARANCE FOR CORNERING, ADDITIONAL PROTECTION FROM GLASS FIBER REINFORCED CAPS.
- ROBOT-GUIDED WELDING AND SELF-PIERCING RIVETING KEEPS OUT THE WET.
- EVEN WHEN LOADED, THE LID IS COMPLETELY REMOVABLE WITH THE QUICK-RELEASE FASTENER.
- 4 LARGE TIE-DOWNS INTEGRATED INTO THE COVER DESIGN ALLOW FOR EXTERNAL LASHING OF OTHER GEAR.
- HIGH STRENGTH/STABILITY FROM EMBOSSED PATTERNS, WELDED EDGES AND PRE-INSTALLED RETAINING RAIL.
- HINGES MADE FROM STAINLESS STEEL, HANDLES MADE FROM ANODISED ALUMINIUM.
- EXCHANGEABLE LID GASKET.



TRAX ADV Medium

37L - 49 x 37 x 23 cm - 5.1kg

- Black Left: SW-ALK0073311000L-B
- Black Right: SW-ALK0073311000R-B
- Silver Left: SW-ALK0073311000L-S
- Silver Right: SW-ALK0073311000R-S
- Carrier: PRO Carrier



TRAX ADV Large

45L - 49 x 37 x 28 cm - 5.5kg

- Black Left: SW-ALK0073310000L-B
- Black Right: SW-ALK0073310000R-B
- Silver Left: SW-ALK0073310000L-S
- Silver Right: SW-ALK0073310000R-S
- Carrier: PRO Carrier

Fitment:

A model specific PRO Carrier is required for fitment.



TRAX ACCESSORIES

TRAX COMPATIBLE ACCESSORIES



TRAX M/L Inner Bag

PN: SW-BCALK0073210000-B
Padded Inner Bag
Volume: 37 to 45L



TRAX M Inner Bag WP

PN: SW-BCKALK0016511000-B
Waterproof Inner Bag for medium size side cases.
Volume: 37L



TRAX L Inner Bag WP

PN: SW-BCKALK0016510000-B
Waterproof Inner Bag for large size side cases.
Volume: 45L



TRAX Inner Lid Bag (M/L)

PN: SW-BCALK0073210100-B
For all TRAX ADV side cases.
Size: 40 x 19 x 5 cm

8-14L



Expansion Bag (M/L)

PN: SW-BCKALK00165117
Water-resistant bag that can be strapped to TRAX side cases.
Size: 43 x 12 x 22 cm



15L

Expansion Bag WP (M/L)

PN: SW-BCALK0073210700-B
Waterproof bag that can be strapped to TRAX side cases.
Size: 45 x 15 x 22 cm



TRAX Spare Corners

Left: SW-ALK0073210300
Right: SW-ALK0073210400
Replacement corners for the outside of TRAX ADV cases.



TRAX Wall Bracket

PN: SW-ALK0016531300-B
Safe storage of TRAX cases when they are not mounted on the bike.



TRAX Lock Set

PN: SW-ALK0016516200
Locking system consisting of 7 matching locks and 2 keys.



TRAX Lock Set PRO

PN: SW-QLS0009515100
7x Locks for cases, 2x Locks with anti-theft protection for PRO side carriers, 2x keys.



TRAX Accessory Mount

PN: SW-ALK0016530900-S
Mounting base for bottle and canister sets.



TRAX Bottle 600ml

PN: SW-ALK0016531000-S
Silver stainless steel bottle with screw cap. Weight: 100g



TRAX Canister 2L

PN: SW-ALK0016531200-B
Additional canister offers the possibility to safely transport petrol or other liquids.



TRAX Canister 2L Kit

PN: SW-ALK0016531100-B
Includes Accessory Mount, canister, filling tube and lashing straps for easy installation.



TRAX Bottle Set (1)

PN: SW-ALK0016530700-S
Includes Accessory Mount, bottle and lashing straps for easy installation.



TRAX Bottle Set (2)

PN: SW-ALK0016530800-S
Includes Accessory Mount, 2x bottles and lashing straps for easy installation.

PREMIUM / PRO CARRIER

TRAX TOOLBOX

Be prepared by stashing tools, spare parts, first aid or a reflective vest in the massive locking TRAX Toolbox.

MATERIAL

- MADE OF STURDY 1.5 MM THICK ALUMINIUM PLATE.
- AWARDED IN SILVER ANODISED OR BLACK POWDER COATED FINISHES.
- SEALED PLASTIC LID.

FUNCTION

- ROBUST STORAGE BOX FOR TOOLS, FIRST AID KIT OR SMALLER PARTS.
- FOR MOUNTING ON PRO SIDE CARRIER.
- CAPACITY: 3.3 LITRES.
- SPLASH-PROOF.

SPACE FOR ALL.



TRAX Toolbox Silver

PN: SW-KFT0015230300-S
Volume: 3.3L
Size: 28 x 19 x 11 cm - 1.1kg

TRAX Toolbox Black

PN: SW-KFT0015230301-B
Volume: 3.3L
Size: 28 x 19 x 11 cm - 1.1kg



TIP:

Designed to be tucked on the inside (or outside) of the PRO Side Carrier, the TRAX Toolbox also comes with brackets for adjusting the exact position.



PREMIUM / WATERPROOF / PRO CARRIER / RACKS

DUSC ABS SIDE / TOP CASES

The DUSC hard case can be used as both a side case and a top case. Made of a scratch-resistant ABS plastic shell with a durable and lightweight aluminium frame.



FEATURES

- M-VARIANT 33 LITRES / L-VARIANT 41 LITRES (FITS FULL-FACE HELMET).
- CAN BE USED AS A SIDE CASE OR TOP CASE.
- LIGHTWEIGHT AND WATERPROOF CASE RUGGED, SCRATCH-RESISTANT ABS SHELL BOUNCES BACK INTO SHAPE.
- EASY MOUNTING ON PRO SIDE CARRIER OR LUGGAGE RACK.
- COMPOSITE 3D STRUCTURED ABS SHELL AND STURDY ALUMINIUM FRAME CONSTRUCTION.
- CO-LOCKING CLOSURE SYSTEM FOR LID AND CASE CARRIER.
- PROTECTIVE CORNERS ON LID SIDE WITH LASHING POINTS.
- INTEGRATED CARRYING HANDLES.



The DUSC case is available in two sizes:

Our hard case sets include the removable PRO side carriers and two DUSC hard cases. Depending on the motorcycle model, the sets are either with two DUSC M, two DUSC L or with one DUSC M and one DUSC L each in combination.



DUSC ABS side case M

PN: SW-HSK0074510000-B
Volume: 33L
Size: 48.6 x 41.3 x 24.7 cm - 3.9 kg
Carrier: PRO Carrier / Racks



DUSC ABS side case L

PN: SW-HSK0074511000-B
Volume: 41L
Size: 48.6 x 41.3 x 29.5 cm - 4.1 kg
Carrier: PRO Carrier / Racks



DUSC ABS side case set M

 MODEL SPECIFIC FITMENT



DUSC ABS side case set L

 MODEL SPECIFIC FITMENT



DUSC ABS side case set M / L

 MODEL SPECIFIC FITMENT

ENTRY LEVEL / PRO CARRIER

AERO ABS SIDE CASES

The AERO ABS with sturdy heavy-duty ABS cases offer a lot of storage per side. Cases mount to the model specific PRO side carriers creating an ideal, fully convertible, sport-touring luggage solution.

MATERIAL

- MADE OF HIGHLY DURABLE, WEATHER- AND UV-RESISTANT ABS MATERIAL.
- TEXTURED SURFACE IS EASY TO CLEAN AND SCRATCH RESISTANT.

FUNCTION

- QUICK-RELEASE FASTENER ATTACHES SAFELY TO SW-MOTECH'S REMOVABLE SIDE CARRIERS.
- COMFORTABLE INTERIOR: PADDED TEXTILE LINING, ELASTIC CROSS-TENSION STRAPS AND MESH POCKET.
- ANTI-THEFT PROTECTION: LOCKS TO THE SIDE CARRIER.
- INCLUDED LOCK PROTECTS CONTENTS BY SECURING EXTERNAL ZIPPERS.
- WATERPROOF INNER BAG INCLUDED.
- CARRYING HANDLE ALLOWS COMFORTABLE CARRYING OF TWO CASES WITH ONE HAND.



AERO ABS side case set

PN: SW-BCHTA0067512000-B
 Volume: 25 - 50L
 Size: 52 x 22 x 39 cm - 1.8 kg
 Carrier: PRO Carrier

Fitment:

A model specific PRO Carrier is required for fitment.



PREMIUM / BLAZE SYSTEM

BLAZE SADDLEBAGS

The **PRO BLAZE** features impressive aesthetics, light weight and a clever attachment system.

A Velcro® strap over the passenger seat bears the weight of the bags, while model specific, removable support arms provide stability for the bags. When no luggage is needed, the support arms remove, leaving only discreet brackets.

FEATURES

- MADE FROM DURABLE, HIGHLY UV-RESISTANT 1680D BALLISTIC NYLON WITH WATER RESISTANT INTERIOR COATING.
- SIDE WALLS IN DIMENSIONALLY STABLE, LAMINATED EVA MATERIAL.
- REMOVABLE SUPPORT ARMS.
- VOLUME EXPANSION WITH ZIPPER FROM 15 TO 20 LITRES.
- A HIGH-PERFORMANCE VELCRO® STRAP SECURES THE LEFT AND RIGHT SADDLEBAG AND BEARS THE WEIGHT OF THE LUGGAGE.
- MAIN COMPARTMENT TO BE LOADED FROM ABOVE.
- OUTER POCKET WITH COVERED ZIPPER.
- MOLLE ATTACHMENT IN STRONG HYPALON MATERIAL ON THE FRONT FOR FASTENING ACCESSORY POUCHES.
- REFLECTIVE DETAILS FOR INCREASED VISIBILITY.
- PRACTICAL CARRYING HANDLE.


TIP:

For motorcycles with higher exhaust pipes, we offer the specially developed BLAZE H variation. Due to the elevated position, the bags are not affected by the heat radiation of the exhaust.


PRO BLAZE Saddlebags

PN: SW-BCHTA0074030000
Volume: 15 - 20L
Size: 46 x 18 x 32 cm - 1.5 kg


PRO BLAZE H Saddlebags

PN: SW-BCHTA0074031000
Volume: 15 - 20 L
Size: 46 x 18 x 32 cm - 1.5 kg


PRO BLAZE mounting set

PN: SW-HTA0074010000-B

ENTRY LEVEL / SLC CARRIER

URBAN ABS SIDE CASES

The solution for sports, naked and short tail motorcycles.

These sleek and tough ABS 16.5 litre side cases mount to the three point SLC carriers and are designed to fit streetfighters, naked sportbikes and modern bikes with shorter tail sections.

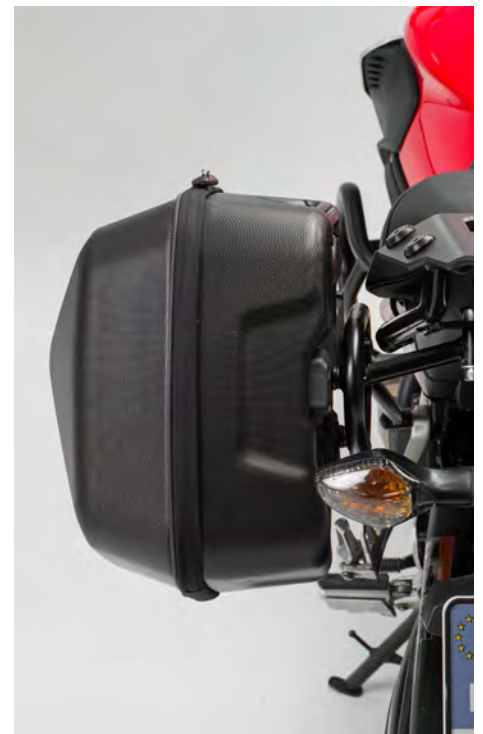
FEATURES

- DURABLE, ROBUST AND LIGHTWEIGHT DUE TO THE 2.5-MM AND 2-MM THICK ABS PLASTIC.
- SECURE QUICK-RELEASE MOUNTING TO SLC SIDE CARRIER.
- MARKS ON THE QUICK-RELEASE FASTENER INDICATES WHETHER THE SUITCASE WAS CORRECTLY LOCKED.
- THEFT PROTECT: SECURES TO SLC CARRIER / LOCKABLE ZIP.
- CARRYING HANDLES CAN CARRY 2 CASES WITH ONE HAND.
- REFLECTIVE DETAILS FOR MORE SAFETY IN TRAFFIC.
- SURFACE IS EASY TO CLEAN AND SCRATCH RESISTANT.
- STOW CONVENIENTLY WITH ELASTIC TENSION STRAPS.
- OPEN IT COMPLETELY OR FLIP IT OPEN PARTIALLY: LID LIMITERS WITH SNAP BUCKLE SECURE THE CONTENTS.
- PADDED POLYESTER TEXTILE LINING, FOAM LAMINATED.
- WATERPROOF INNER BAG INCLUDED.



REQUIRED TO MOUNT:

SLC Carrier



URBAN ABS side case L

PN: SW-BCHTA0067710000L-B
Volume: 16.5L
Size: 38 x 23 x 36 cm - 1.4kg
Carrier: SLC Carrier



URBAN ABS side case R

PN: SW-BCHTA0067710000R-B
Volume: 16.5L
Size: 38 x 23 x 36 cm - 1.4kg
Carrier: SLC Carrier



URBAN ABS side case set

PN: SW-BCHTA0067710000-B
Volume: 16.5 - 33L
Size: 38 x 23 x 36 cm - 4.6kg
Carrier: SLC Carrier

PREMIUM / RACKS

TRAX ADV TOP CASE

It's stable, dust and waterproof, pairs with the TRAX ADV side cases and is built with those high standards.



MATERIAL

- PREMIUM TOP CASE MADE FROM 1.5MM THICK ALUMINIUM.
- PROTECTION AGAINST OXIDATION AND ABRASION WITH POWDER COATING (BLACK) OR ANODISING (SILVER).
- ADDITIONAL PROTECTION ON CORNERS MADE OF GLASS FIBER REINFORCED POLYAMIDE.

FUNCTION

- HINGED LID WITH LIMITER STAY, STAINLESS STEEL LATCH, STURDY CARRYING HANDLES AND INTEGRATED MOUNTS.
- 100% WATER AND DUSTPROOF DUE TO ROBOTIC WELDING AND PUNCH RIVET TECHNOLOGY.
- CASE LID AND CASE CAN LOCK WHEN ATTACHED TO CARRIER.
- REINFORCED STRENGTH THANKS TO EMBOSSED METAL.



TRAX ADV Top case black

PN: SW-ALK0073315000-B
Volume: 38L
Size: 41 x 34 x 33 cm - 4.8 kg
Carrier: Adventure Rack

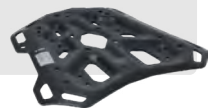


TRAX ADV Top case silver

PN: SW-ALK0073315000-S
Volume: 38L
Size: 41 x 34 x 33 cm - 4.8 kg
Carrier: Adventure Rack

REQUIRED TO MOUNT:

Adventure Rack



ACCESORIES: Compatible with the TRAX ADV Top Cases



TRAX Top case inlay

PN: SW-ALK0073210700-B



Top case lid net

PN: SW-BCALK0073210600-B



Top case inner bag

PN: SW-BCALK0073210300-B



TRAX lock set

PN: SW-QLS0009515100

ENTRY LEVEL / RACKS

URBAN ABS TOP CASES

This aerodynamic top case is the perfect size for short trips or leisure rides, and will even hold a full-face helmet.


FEATURES

- DURABLE, ROBUST AND LIGHTWEIGHT DUE TO THE 2.5MM (BOTTOM) AND 2MM (TOP) THICK ABS PLASTIC.
- LIGHTWEIGHT TOP CASE FOR SPORT MOTORCYCLES, NAKED BIKES AND ENDUROS.
- ANTI-THEFT PROTECTION BY SECURING TO THE RACK (DHV SYSTEM ONLY), LOCKABLE ZIPPER AND LOCK FOR MOTORCYCLE LUGGAGE.
- WITH THE VOLUME FULLY EXPANDED, THE URBAN ABS TOP CASE HOLDS A HELMET.
- REFLECTIVE DETAILS.



LIGHTWEIGHT, AERODYNAMIC.


URBAN ABS TOP CASE

PN: SW-BCHTA0067721000-B
Volume: 16 - 29L
Size: 36 x 40.5 x 21.5 cm - 3 kg


**STRAP
VERSION**
URBAN ABS TOP CASE (strap)

PN: SW-BCHTA0067722000-B
Volume: 16 - 29L
Size: 36 x 40.5 x 21.5 cm - 3 kg

DHV MOUNTING:

Easily attaches to the Street Rack using the DHV system, a newly developed quick-release fastener.

Adapter kit is required for installing on the Adventure Rack.

STRAP MOUNTING:

Reliable 4-point mount with loop straps gives this variation of the a secure hold on almost any motorcycle tail.

Includes non-slip and vibration dampening base.



LUGGAGE CARRIERS

SW-Motech offers a range of lightweight and seamless luggage carriers, designed for a large range of motorcycle models and luggage needs.



PRO SIDE CARRIERS

Premium / Hard & Soft Panniers


MODEL SPECIFIC FITMENT

Modular, detachable side carrier system. It fits a wide range of hard and soft panniers, and its quick-release mechanism makes it easy to remove when not in use. Compatible with a wide variety of hard cases including TRAX ADV, TRAX ION, and AERO ABS, as well as soft luggage like SysBags and Legend (adapter required). PRO Side Carriers are tailored to each motorcycle model, taking into account its shape, design, and attachment points to provide a precise and secure fit.



PRO TO SLC ADAPTER

Attach SLC bags to your PRO carrier



PN: SW-KFT0015236500

Fit any slc type bag to a pro carrier using the adapter. Kit includes adapter for both sides.




SLC SIDE CARRIERS
 Easy Install / Urban Luggage


MODEL SPECIFIC FITMENT

The SLC Side Carrier features a slim profile and sleek design making it nearly invisible when the luggage is not attached. This maintains the aesthetic appeal of your bike, especially on retro or café racer styles where appearance is key. Compatible with a variety of luggage options, including Legend, SysBag, and Urban ABS. SLC Side Carriers are tailored to each motorcycle model to provide a precise and secure fit.


SLH SIDE CARRIERS
 Legend LH / Quick-Lock


MODEL SPECIFIC FITMENT

The bike-specific SLH bag carrier can be easily and quickly mounted on to original attachment points on the fender strut. This provides the slimmest profile when bag is detached. Legend Gear side bags LH1 / LH2 can be attached and removed within seconds due to a quick-lock system.



LUGGAGE RACKS

SW-Motech Luggage racks offer maximum flexibility for your motorcycle rear - designed to impress with their sturdiness, versatility and ideal fit.



ADVENTURE RACK

Top Cases



MODEL SPECIFIC FITMENT

Built for extreme loads with a strong, practical design, refined through years of customer and test rider feedback. This aluminium rack is optimised for touring and off-road use, featuring a large contact surface, multiple lashing eyelets, and functional holes for mounting top cases from SW-MOTECH, Givi, Krauser, Shad, or SysBag WP bags with an adapter plate.



MATERIAL

- MADE OF LIGHTWEIGHT YET STRONG 4 MM THICK ALUMINIUM ALLOY.
- EFFECTIVE CORROSION PROTECTION DUE TO BLACK POWDER COATING.

FUNCTION

- EXTREMELY RESILIENT TO VIBRATION, SHOCK AND HEAVY LOADS UNDER TOUGH CONDITIONS.
- EASY MOUNTING ON ORIGINAL MOUNTING POINTS WITH BIKE-SPECIFIC MOUNTING ELEMENTS.
- NUMEROUS LARGE LASHING EYES.
- MULTIPLE LASHING POINTS FOR STRAPS OR HOOKS.




STREET RACK

Top Cases



MODEL SPECIFIC FITMENT

The slim STREET-RACK is designed for sportbikes, naked bikes, and smaller street bikes. It allows tool-free, one-hand installation of the URBAN ABS top case or an adapter plate, providing a stable base for top cases from SW-MOTECH, Givi, Krauser, Shad, or SysBag. For larger luggage, the STREET-RACK can be paired with an extension for extra surface area.


MATERIAL

- MADE OF 5 MM THICK ALUMINIUM ALLOY.
- BLACK POWDER COATING PROTECTS AGAINST CORROSION.

FUNCTION

- PERFECT FIT DUE TO BIKE SPECIFIC ATTACHMENTS AND HIGH-PRECISION CNC PRODUCTION PROCESSES.
- COMPACT SHAPE COMPLEMENTS THE LINES OF SPORTY MOTORCYCLES AND SMALL STREET BIKES.
- SIMPLE ASSEMBLY AT THE ORIGINAL MOUNTING POINTS.




SEAT RACK
 Top Cases

The passenger seat SEAT-RACK is the simplest way to attach luggage to sporty motorcycles or to create extra storage for travel enduro bikes. Replaces the original passenger seat. The SEAT-RACK can usually also be opened using the ignition key. Design and fit are coordinated to suit the vehicle's profile.


FEATURES

- PERFECT FIT THANKS TO BIKE-SPECIFIC DEVELOPMENT.
- AREAS FOR STRAPPING ON SOFT LUGGAGE.
- THE TANK RING FOR EVO AND PRO TANK BAGS IS ALSO MOUNTABLE.
- MADE FROM ALUMINIUM WITH BLACK POWDER COATING.


ALU RACK
 Top Cases / Adapters

The versatile ALU-RACK offers an elegant solution for securing top cases, as well as SysBag. The adapter plate mounts easily with three quick-release fasteners, and the QUICK-LOCK system allows for one-handed attachment of the top case. The ALU-RACK can also support tail bags.


FEATURES

- BIKE-SPECIFIC DEVELOPMENT AND HIGH-PRECISION CNC PRODUCTION PROCESS ENSURE THE BEST FIT.
- PERFECTLY SUITED TO THE MOTORCYCLE'S PROFILE.
- LASER CUT FROM ALUMINIUM ALLOY.
- CORROSION PROTECTIVE POWDER COAT SURFACE.
- CAN ALSO BE USED IN COMBINATION WITH PRO SIDE CARRIERS AND TRAX SIDE CASES.



PREMIUM / ADD ONS

RACK ACCESSORIES



Adapters for mounting luggage on racks make life easy. Turn a rack from one style to another, into a ring, or into a mount for other luggage such as Shad, Givi, Kappa etc. Luggage rack extensions enlarge the surface area, making a perfect base for the Rackpack or other tail bags.

ADVENTURE RACK ACCESSORIES



**Rack Extension
(Adventure) 45 x 30cm**

PN: SW-GPT0015235500-B



**Rack Adapter
(Street rack top)**

PN: SW-GPT0015235000-B



**PRO tank ring for
Adventure Rack**

PN: SW-GPT0015236100-B



**Adapter kits for Rack
(Shad, givi, etc.)**

 MODEL SPECIFIC FITMENT

STREET RACK ACCESSORIES



**Rack Extension
(Street) 45 x 30cm**

PN: SW-GPT0015254500-B



**PRO tank ring for Rack
(with adapter plate)**

PN: SW-GPT0015255200-B



**PRO tank ring for Rack
(without adapter plate)**

PN: SW-GPT0015255300-B



**Adapter kits for Rack
(Shad, givi, etc.)**

 MODEL SPECIFIC FITMENT

ALU RACK ACCESSORIES



**Rack Extension
(ALU) 43 x 27cm**

PN: SW-GPT0015243001-B



**PRO tank ring for ALU
rack**

PN: SW-TRT0078720400-B



**Adapter plate for Rack
(TRAX top case)**

PN: SW-GPT00152400



**Adapter plates for
Rack (Shad, givi, etc.)**

 MODEL SPECIFIC FITMENT



UNIVERSAL BRACKETS

For SLC Carrier

The side bracket, mounted with a single click on the SLC side carrier, is suitable for attaching all kinds of items. The mount has numerous lashing eyes on which the included luggage net is hooked. In addition, various attachment points are provided which among other things, are compatible with the RotopaX fastening system.



Universal Bracket for SLC Carrier (incl. Net)

Left Side PN: SW-HTA0040115100
 Right Side PN: SW-HTA0040115200

FEATURES

- FASTENED TO THE SEPARATELY AVAILABLE SLC SIDE CARRIER VIA QUICK-RELEASE FASTENER
- THE INCLUDED LUGGAGE NET CAN BE HOOKED INTO THE LASHING EYES.
- PRE-DRILLED ATTACHMENT POINTS, COMPATIBLE WITH ROTOPAX ATTACHMENT SYSTEM + OTHERS.



NUMBER PLATE

For SLC Carrier

Bought a Café Racer? We offer the matching number plate in a retro look. The quick-release fastener is mounted on the back of the plate and can be locked with just one click to the SLC side carrier.



Number Plate for SLC Carrier

Left Side PN: SW-HTA0040115300
 Right Side PN: SW-HTA0040115400

FEATURES

- NUMBER PLATE MADE FROM BRUSHED ALUMINIUM FOR ATTACHING TO THE SLC SIDE CARRIER.
- QUICK-RELEASE FASTENER MOUNTED ON THE REVERSE.



PREMIUM / HUMAN CARRIER

PRO COSMO BACKPACK

Every detail of the Cosmo Backpack is thought out extensively, from the slightly curved back section to the adjustable, ergonomic chest harness-style straps.



FEATURES

- BALLISTIC NYLON AND 210D RIPSTOP FABRIC CONSTRUCTION.
- BACK PADDING MADE OF VENTILATING MESH FABRIC.
- MOLLE SYSTEM ON OUTER PANEL.
- ERGONOMIC SHAPE.
- FOUR ADJUSTABLE VOLUME COMPRESSION STRAPS.
- FULLY-ADJUSTABLE PADDED CHEST HARNESS SHOULDER STRAPS.
- GLOVE FRIENDLY EASY CLICK CLOSURE SYSTEM.
- HIP BELT KEEPS PACK IN PLACE WHILE RIDING.
- REFLECTIVE DETAILS FOR ADDED VISIBILITY.
- LID COMPARTMENT WITH SIDE ZIPPERS.
- COMPARTMENT FOR 15" LAPTOP OR HYDRATION BLADDER.
- HYDRATION TUBE OUTLET.
- STOWABLE RAIN COVER INCLUDED.
- CARRYING HANDLE.



PRO Cosmo Backpack

PN: SW-BCRUC0000430000
Volume: 16 L
Size: 45 x 30 x 19 cm - 1.3 kg

Replacement Rain Cover

PN: SW-BCZUB0013630000
Weight: 0.1 kg



PREMIUM / HUMAN CARRIER

DAILY WP BACKPACK

Ensure your belongings are transported safely, comfortably, and dry. Adjustable padded carrying straps and removable hip belt combine with the ergonomically shaped back padding ensure a high level of comfort.

FEATURES

- WATERPROOF MAIN COMPARTMENT MADE OF TPU MATERIAL WITH ROLL-TOP CLOSURE.
- TIE-DOWN STRAPS ON THE FRONT FOR COMPACT LUGGAGE TRANSPORT.
- MOLLE ATTACHMENT FOR MOUNTING ACCESSORY BAGS (E.G., PRO PLUS WP).
- CHEST STRAP WITH MAGNETIC CLICK CLOSURE.
- PADDED CARRYING STRAPS, ADJUSTABLE IN LENGTH.
- REMOVABLE HIP BELT.
- ERGONOMICALLY SHAPED BACK PADDING.
- REFLECTIVE FEATURES ON THE FRONT AND SIDES.
- ADDITIONAL REFLECTIVE DETAIL ON THE BACKPACK STRAPS.
- REINFORCED CARRYING HANDLE.



Daily WP Backpack

PN: SW-BCWPB0000320000

Volume: 22L

Size: 38.4 x 14.5 x 70 cm - 1.7 kg

TIP:

You can easily store a 15-inch notebook and a tablet in the removable laptop compartment.



WATERPROOF / HUMAN CARRIER

DRYBAG 300 BACKPACK

The Drybag 300 backpack is your stylish accessory for daily use offering secure transport in all weather conditions. The roll-top closure allows quick and easy closure protecting the contents from water and dirt.

- REMOVABLE TEXTILE LAPTOP COMPARTMENT.
- SPACIOUS OUTER POCKET (SPLASH-PROOF).
- PADDED CARRYING STRAPS, ADJUSTABLE IN LENGTH.
- BACK PADDING WITH HIGH WEARING COMFORT.
- DIMENSIONALLY STABLE BASE FOR SECURE FOOTING.
- REMOVABLE HIP BELT.
- REFLECTIVE DETAILS ON STRAPS AND ON FRONT.



Drybag 300 Backpack
 PN: SW-BCWPB0001120000
 Volume: 30L
 Size: 33 x 17 x 70 cm - 1.5kg

FLEXPACK BACKPACK

When folded up the Flexpack backpack fits in every tank bag. When needed, however, it can be transformed into a backpack with up to 30 litres of capacity. The 75D ripstop polyester material with PU coating ensures weather protection on top of everything else.

- EXTREMELY COMPACT FOLDING SIZE.
- HOLDS A MOTORCYCLE HELMET.
- 75D RIPSTOP POLYESTER CONSTRUCTION.



Flexpack Backpack
 PN: SW-BCWPB0001910000
 Volume: 30L
 Size: 2.2 x 2.2 x 5 cm - 0.2kg



WATERPROOF / HUMAN CARRIER

BELT WP & LEG BAG WP

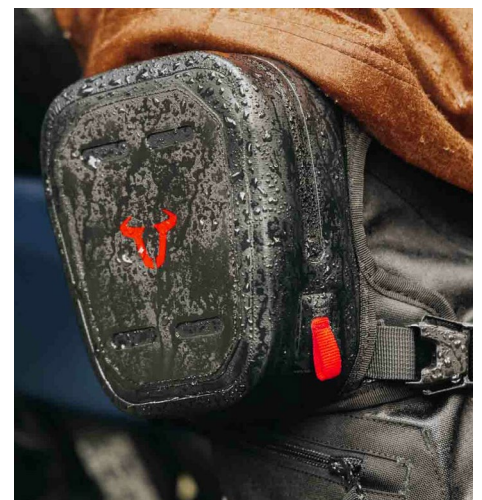
BELT WP

Completely waterproof, this stylish bum bag is perfect for every motorcycle adventure thanks to clever placement.

LEG BAG WP

The Leg Bag WP is worn close to your body and provides no restrictions on your freedom of movement. Completely waterproof ready for any adventure.

- MADE FROM DURABLE AND ABRASION-RESISTANT TPU MATERIAL.
- WITH WATERPROOF SPIRAL ZIP.
- FRONT PATCH MADE OF 100% WATERPROOF HYPALON.
- INNER MESH POCKET WITH ELASTIC CLOSURE.
- NON-SLIP MATERIAL ON THE BOTTOM.



Belt WP

PN: SW-BCWPB0000520000
Size: 19.5 x 5.5 x 13 cm - 0.3kg



Leg Bag WP

PN: SW-BCWPB0002610000
Size: 15.7 x 6.9 x 19.7 cm - 0.3kg

Don't have the option to attach a tank bag?

Try the Leg Bag WP. Particularly popular with riders of retro bikes, this functional leg bag is suitable for short trips as well as long distances. The holster can adjust to suit leg length as well as thigh and hip circumference.



LEGEND PREMIUM / HUMAN CARRIER

LEGEND GEAR BAGS

Tank bags, tail bags and other Legend Gear bags feature the military grade fastening system MOLLE to mount SW-Motech accessories. The Legend Gear Holster LA7 features MOLLE loops to attach the LA8 leg bag and Legend Gear LA1 and LA2 accessory bags. For the best possible comfort, the holster can be individually adjusted to leg length, thigh and hip circumference or even combined with another belt.



ACCESSORIES WITH STYLE.


Holster LA7

PN: SW-BCTRS0040910000
Weight: 0.2 kg


Accessory Bag LA1

PN: SW-BCTRS0040310000
Volume: 0.8L
Size: 18.0 x 12.0 x 6.0 cm - 0.1 kg


Accessory Bag LA2

PN: SW-BCTRS0040410000
Volume: 1L
Size: 18.0 x 15.0 x 5.0 cm - 0.2 kg


Accessory Bag Set LA1 / LA7

PN: SW-BCTRS0040950100
Volume: 0.8L
Size: 18.0 x 12.0 x 6.0 cm - 0.1 kg


Leg Bag LA8

PN: SW-BCTRS0041010000
Volume: 1.3L
Size: 19.5 x 13.0 x 5.0 cm - 0.2kg


Leg Bag Set LA8 / LA7

PN: SW-BCTRS0040950000
Volume: 1.3L
Size: 19.5 x 13.0 x 5.0 cm - 0.2kg

PREMIUM / ADD ONS

LUGGAGE ACCESSORIES



Accessories to complement the luggage range, including packable waterproof storage bags, anti-theft protections and additional ROK straps.


Lock for luggage

PN: SW-BCLOC0000110200-B


Drybag storage bag 20L

PN: SW-BCWPB0001610000


SET
Drybag storage bag 4/8/13 L

PN: SW-BCWPB0001710000


Cable lock for luggage

PN: SW-BCLOC0000210100-B


ROK Straps (0.3 - 1m)

PN: SW-BCROK0071110000-B


ROK Straps (0.5 - 1.5m)

PN: SW-BCROK0071110100-B


ROK STRAPS:

The tough and long-lasting ROK straps are elastic and provide secure hold for luggage. The straps can be fastened almost anywhere and adjusted for length using the metal buckle. The straps and hardware have smooth edges to prevent scratches.



PREMIUM / FIT TO BIKE

CENTERSTANDS

The lightweight steel-tube centerstands are designed to fit close preserving ground clearance. Threaded spring tensioner design makes installation/use incredibly easy.

MATERIAL

- MADE OF ROBUST STEEL
- BLASTING THE SURFACE PRIOR TO POWDER COATING IMPROVES CORROSION RESISTANCE.

FUNCTION

- ENSURES A SECURE STAND ON TRIPS WITH LOTS OF LUGGAGE AND DURING MAINTENANCE.
- BIKE-SPECIFIC DESIGN FOR EASY MOUNTING AND HIGH CORNERING CLEARANCE.
- EASY TO LIFT UP THE MOTORCYCLE.
- OUTRIGGER FOOT PEDAL FOR OPTIMAL LEVERAGE.
- MANY MODELS AVAILABLE WITH SCREW IN TENSIONER SPRINGS FOR EASY MOUNTING.



Centerstands



MODEL SPECIFIC FITMENT

SIDE STAND FOOT EXTENSIONS

Durable foot extension with large contact surface for enhanced stability, even on uneven ground/soft soil.

MATERIAL

- HIGH-QUALITY WORKMANSHIP: CNC MILLED.
- ANODISED ALUMINIUM ALLOY.

FUNCTION

- DOUBLES THE FOOT'S SURFACE AREA (BIKE SPECIFIC).
- PROVIDES SECURE POSITIONING ON SOFT OR UNEVEN GROUND.
- BIKE-SPECIFIC SANDWICH DESIGN PROVIDES STRENGTH AND PRECISION FIT.
- MOUNTS ON ORIGINAL SIDE STAND.



Extension for Side Stand



MODEL SPECIFIC FITMENT

PREMIUM / FIT TO BIKE

BAR END MIRRORS

Mirrors from SW-MOTECH offer clear visibility and safety, along with a sleek contemporary look. Our modern adjustable mirrors and Bar End Mirrors are not only eye-catching, they offer maximum functionality.

- HIGH-QUALITY FORGED AND BLACK ANODISED ALUMINIUM.
- MODERN EDGE DESIGN WITH RE-MILLED SECTIONS.
- BALL HEAD BEHIND THE MIRROR HOUSING WITH LARGE ADJUSTMENT RANGE ENSURES PRECISE ALIGNMENT.
- MIRROR ARM LENGTH: 157 MM.
- ALL COMPONENTS REQUIRED FOR MOUNTING ON YOUR MOTORCYCLE ARE INCLUDED IN DELIVERY.
- COVER CAPS FOR THE THREADS OF THE ORIGINAL MIRRORS INCLUDED IN DELIVERY.
- MIRRORS HAVE AN ECE TEST MARK AND ARE THEREFORE REGISTRATION-FREE.


Bar End Mirrors

MODEL SPECIFIC FITMENT

ADJUSTABLE SPORT MIRRORS

- HIGH-QUALITY FORGED AND ANODISED ALUMINIUM.
- SHORT OR LONG VARIANT AVAILABLE
- SHORT ARM LENGTH: 152 MM.
- LONG ARM LENGTH: 182 MM
- MODERN AND FLAT EDGE DESIGN.
- PARTIAL AREAS AND FUNCTIONAL SURFACES MILLED.
- 4 DIFFERENT ADJUSTMENT POSSIBILITIES.
- STEPLESS ROTATION AND INCLINATION OF MIRROR ARM.
- MIRROR ARM CONTINUOUSLY ADJUSTABLE BY 30 MM.
- MOUNTING ON EXISTING MIRROR CONNECTION.
- WITH ECE TEST MARK.


Adjustable Sport Mirrors

MODEL SPECIFIC FITMENT


PREMIUM / FIT TO BIKE

MIRROR EXTENSIONS

Mirror extension elements provide a significantly improved field of vision by relocating the mirrors to the outside. Once adjusted and screwed on, the extensions provide secure hold for the mirrors.

FEATURES

- **MIRROR THREAD:** UNIVERSAL MIRROR EXTENDERS FOR MIRROR THREAD RELOCATE MIRRORS THAT ARE MOUNTED ON THE HANDLEBAR UP TO 4 CM IN HEIGHT AND SIDEWARDS.
- **PROFILE EXTENSION:** PROFILE EXTENSIONS OFFER A LATERAL RELOCATION UP TO 4 CM.
- **HINGE EXTENSION:** AN ADJUSTABLE HINGE RELOCATES THE MIRRORS UP TO 4 CM Laterally.
- **BMW ONLY:** MIRROR EXTENDERS FOR BMW GET MOUNTED TO THE MIRROR THREAD AND LATERAL RELOCATED UP TO 6.6 CM.



Mirror Extensions



MODEL SPECIFIC FITMENT



PREMIUM / FIT TO BIKE

EVO LIGHTS

EVO fog lights with broad dispersion create more safety and better visibility in bad weather conditions and increase your visibility to on-coming traffic. LED technology with 1050 luminous flux.

EVO high beam lights are ideal for long distances in conditions where maximum beam distance with narrow dispersion is desired to increase visibility and safety.

Clamp allows lights to be mounted to crash bars or other parts with the appropriate pipe diameter. Rubber inserts adapt to 22 / 25.4 / 26 / 27 / 28 mm bars.

FEATURES

- HIGH-QUALITY ALUMINIUM HOUSING, POWDER COATED.
- MODEL SPECIFIC KITS HAVE MODEL-SPECIFIC LIGHT MOUNT
- WATER AND DUSTPROOF (SAFETY CLASS: IP69).
- VOLTAGE: 12V.
- LED TECHNOLOGY REDUCES ELECTRICAL SYSTEM LOAD AND REDUCES HEAT OUTPUT, FOR GREATER LONGEVITY.
- COMPACT SIZE WITH A DIAMETER OF 7.1 CM.
- LIGHTS ARE ECE APPROVED.
- UNIVERSAL SETS COME WITH BAR CLAMP OR SET WITHOUT.
- INCLUDES HANDLEBAR SWITCH TO OPERATE.



EVO light guards

Aluminium Black.
PN: SW-NSW0049010500



EVO light guards

Aluminium Silver.
PN: SW-NSW0049010201



EVO Fog Light Kit

SET NO CLAMP: SW-NSW0049010001
SET W/ CLAMP: SW-NSW0000451000-B
Power: 12 W / 1.050 LM

EVO High Beam Light Kit

SET NO CLAMP: SW-NSW0049010101
SET W/ CLAMP: SW-NSW0000461000-B
Power: 12 W / 800 LM



Crash bar clamps for lights

PN: SW-NSW0000413000-B
For Ø 22/25,4/26/27/28 mm bars

PREMIUM / FIT TO BIKE

CRASH BARS

The design is manufactured specifically for each motorcycle model, fits seamlessly into the appearance of the vehicle and at the same time offers optimum cornering clearance. Depending on the motorcycle model, the crash bars are available in various designs, material and colour variations.

MATERIAL

- ROBUST STEEL CONSTRUCTION.
- WEATHER AND CORROSION-RESISTANT POWDER COATING.

FUNCTION

- RELIABLE PROTECTION FOR IMPORTANT COMPONENTS.
- HIGHLY STABLE CONSTRUCTION.
- MODEL-SPECIFIC DEVELOPMENT GUARANTEES PRECISE FIT AND RELIABLE FRAME LINKAGE.
- OPTIMISED LEAN ANGLE GUARANTEED.



Crash Bars



MODEL SPECIFIC FITMENT

UPPER CRASH BARS

The upper crash bars primarily protect the fairings. Depending on model, they are powder coated or stainless steel and are mounted as an addition to the SW-MOTEC crash bar or the original crash bar.

MATERIAL

- ROBUST STEEL CONSTRUCTION.
- WEATHER AND CORROSION-RESISTANT POWDER COATING.

FUNCTION

- FAIRING PROTECTION.
- BIKE-SPECIFIC DEVELOPMENT GUARANTEES A SNUG FIT.
- SIMPLE, SCREW-ON MOUNTING ON ORIGINAL ATTACHMENT POINTS.



Upper Crash Bars



MODEL SPECIFIC FITMENT

PREMIUM / FIT TO BIKE

ENGINE GUARDS

State-of-the-art design and production gives these bike specific protectors a secure fit without affecting ground clearance. The installation on frame mounting points lends additional stability and allows for easy installation.

FEATURES

- DURABLE DESIGN MADE OF HIGH QUALITY ALUMINIUM ALLOY.
- PROTECTION FROM ROCK CHIPS AND COLLISION.
- BIKE SPECIFIC DEVELOPMENT FOR PERFECT FIT.
- RELIABLE AND EASY INSTALLATION ON ORIGINAL ATTACHMENT POINTS, MODIFICATIONS TO THE MOTORCYCLE ARE NOT REQUIRED.

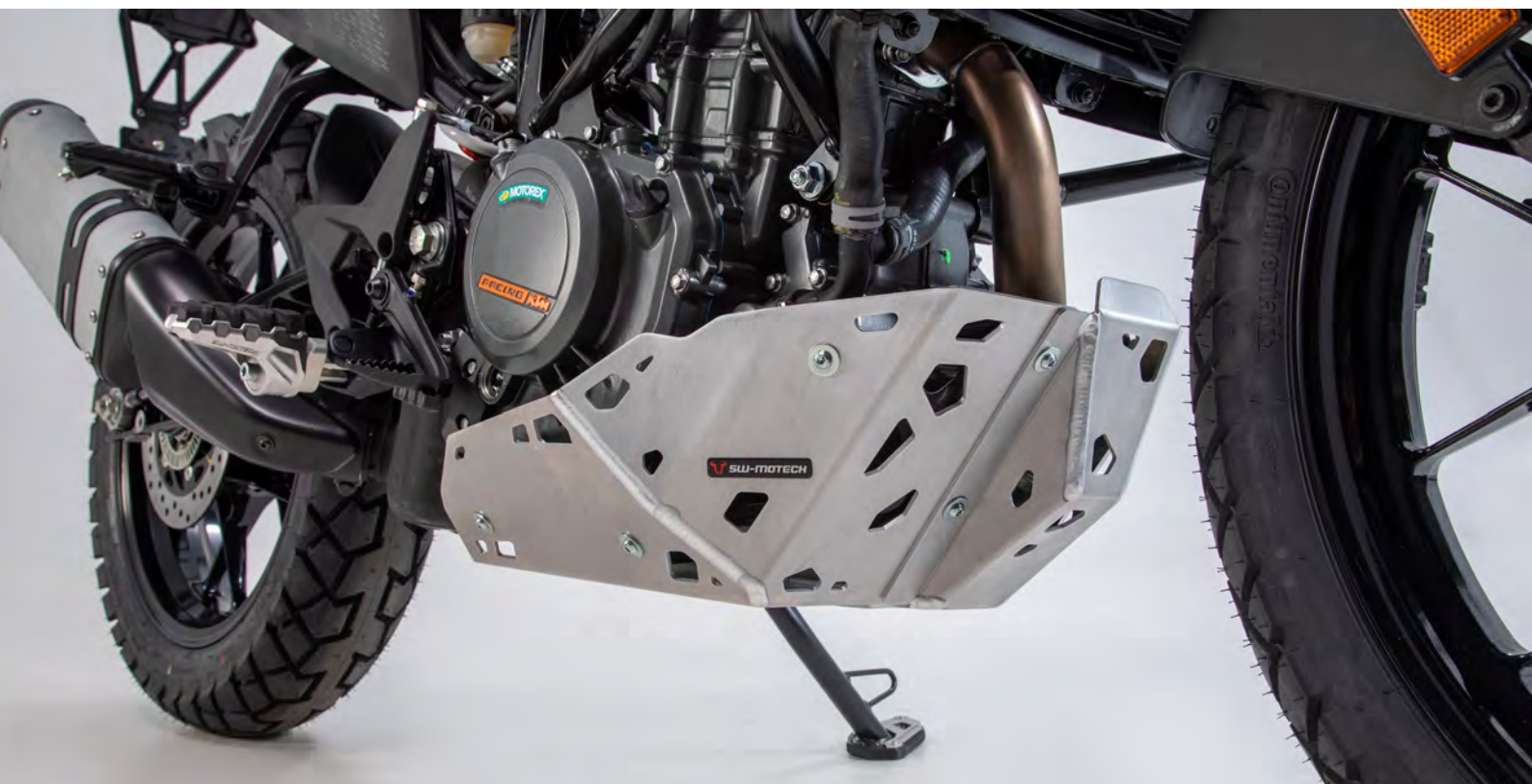


BUILT FOR YOUR NEXT ADVENTURE.

Engine Guard



MODEL SPECIFIC FITMENT



PREMIUM / FIT TO BIKE

FRAME SLIDERS

Additional protection in case of a fall is provided by the slider set for attaching to the frame. The shape, surface and material of the pads provide excellent sliding properties to reduce damage to the motorcycle. If necessary, CNC-milled slider pads made from abrasion-resistant polyamide can be quickly exchanged.



MATERIAL

- WELL-SHAPED, EXCHANGEABLE (IF NEEDED) SLIDER PAD MADE OF ABRASION-RESISTANT POLYAMIDE.
- EXTREMELY SOLID, CNC-MILLED SUBSTRUCTURE MADE OF ALUMINIUM ALLOY.

FUNCTION

- GOOD SLIDING PROPERTIES AND EMERGENCY OPERATING FEATURES.
- LARGE CONTACT SURFACE FOR BEST-POSSIBLE FORCE DISTRIBUTION, PROTECTION OF FRAME, ENGINE AND FAIRING.
- EASY MOUNTING AND STURDY FRAME ATTACHMENT THANKS TO BIKE-SPECIFIC ADD-ON ELEMENTS



Replacement Slider Set



FRAME SLIDER DESIGNS: Vary by model for the best protective fit and styling.



E.G. Fitment: Honda



E.G. Fitment: Yamaha



E.G. Fitment: Kawasaki

PREMIUM / FIT TO BIKE

AXLE SLIDERS

Made of abrasion resistant plastic to protect the drive shaft and swing arm from damage in the event of a crash. In combination with the TPE sheathing, the crash pads provide additional cushioning in case of unintentional road contact.

Axles are made of high-quality steel with zinc-nickel coating to guarantee long durability. If necessary, CNC-milled abrasion-resistant polyamide slider pads can be quickly exchanged.

MATERIAL

- ROBUST CORE OF FIBERGLASS-ENFORCED PLASTIC (PA6 GF30).
- HIGH MECHANICAL DAMPENING CAPACITY.
- MATTE BLACK SURFACE WITH POLISHED BULL LOGO IN RED.
- AXLES MADE OF HIGH-QUALITY STEEL WITH ZINC-NICKEL COATING.

FUNCTION

- GOOD SLIDING PROPERTIES AND EMERGENCY OPERATING FEATURES.
- PROTECTS DRIVE SHAFT AND THE SWING ARM.
- LARGE CONTACT SURFACE FOR BEST POSSIBLE FORCE DISTRIBUTION.
- SIMPLE MOUNTING ON THE FRONT AND REAR AXLES.



TIP:

The bike-specific protectors are available in different styles depending on the motorcycle model.



Slider Set for front axle



Slider Set for rear axle



Replacement Crash Pads

PN: SW-STP0017610100-B
Sold as a pair.

PREMIUM / FIT TO BIKE

PROTECTION PARTS



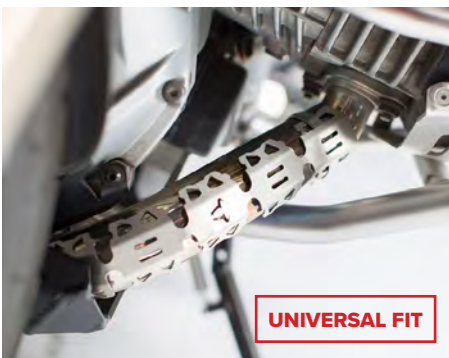
MODEL SPECIFIC FITMENT

Many components vital to the engine's survival are often left unprotected. In the event of a crash, damage can occur with serious consequences: Water pump, brake fluid reservoir, brake cylinders, radiator, control levers, alternator cover and a boxer's cylinder all need to remain undamaged.

Protective components also prevent damage to clothing and footwear as well as injuries caused by hot exhaust pipes and the drive chain. Protection parts are aluminium, typically milled and anodised.


Potentiometer Guard

Screen Reinforcement

Engine Case Protection

UNIVERSAL FIT
Header Pipe Guard
 PN: SW-KRS0016910000-S

Water Pump Protection

Brake Reservoir Guard

Chain Guard

Heel Guard

Brake Cylinder Guard



Handguard



Extension for chain guard



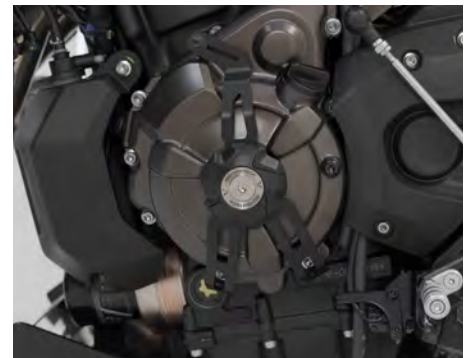
Radiator Guard



Clutch Slave Cylinder guard



Windscreen



Alternator Cover Guard



Cylinder Guard



Injector Cover Set



Oil Cooler Guard



PREMIUM / FIT TO BIKE

GEAR LEVER

Gear levers by SW-MOTECH combine specially selected materials and innovative design with perfect fit. Our high-quality, aluminium alloy milled gear levers can be adjusted either freely or at preset lengths depending on your bike model to provide the perfect shifting position.

FEATURES

- CNC-MILLED ALUMINIUM COATED WITH HART-COAT®.
- GEARSHIFT HOLDER IS EITHER FREELY ADJUSTABLE OR CAN BE ADJUSTED IN INTERVALS OF 1, 2 OR 3 CENTIMETERS (ALSO BEYOND THE ORIGINAL POSITION).
- SPRING MECHANISM ALLOWS THE GEAR LEVER TO FOLD IN AND PROTECTS AGAINST BREAKAGE IN CASE OF A FALL.
- SILVER SMOOTH LEVER TREAD INCLUDED AS STANDARD.
- ALSO AVAILABLE IN SILVER AND BLACK KNURLED OR BLACK PLAIN.


Gear Lever

MODEL SPECIFIC FITMENT

GEAR LEVER ACCESSORIES: Customise gear lever to your preferred feel and styling.


Gear Lever Tread

PN: SW-FSC0012710300-B
Knurled. Black.
Extension included.


Gear Lever Tread

PN: SW-FSC0012710100-S
Knurled. Silver.
Extension included.


Gear Lever Tread

PN: SW-FSC0012710200-B
Smooth. Black.
Extension included.


Gear Lever Extension

PN: SW-FSC0012710000-S
15mm. Smooth. Silver.
Attaches to gear lever.



PREMIUM / FIT TO BIKE

BRAKE PEDAL

The adjustable brake pedal allows for optimised handling and control of the brake. Length adjusts by 5cm, and tread patterns increase grip and stability.



FEATURES

- BIKE-SPECIFIC ALUMINIUM LEVER ARM
- ROBUST CONSTRUCTION, PERFECT FIT: CNC-MILLED, HARTCOAT® COATED ALUMINIUM.
- BETTER ERGONOMICS/SAFE OPERATION OF BRAKE PEDAL.
- HIGH-QUALITY MILLED TREAD FOR MAXIMUM STABILITY.
- KNURLING INCREASES GRIP AND PREVENTS SLIPPING.
- PLATFORM FEATURES VARIOUS ADJUSTABLE POSITIONS.
- STREET TREAD SILVER INCLUDED BY DEFAULT IN DELIVERY.


Brake Pedal

MODEL SPECIFIC FITMENT

Adventure Step for pedal

 PN: SW-FBL0012711000
 Black / Silver.

Street Step for pedal

 PN: SW-FBL001271100-B
 Knurled Black.

BRAKE PEDAL EXTENSION

Complements the OEM brake lever appearance and allows both a widening and an increase of the overall contact surface area.

FEATURES

- TO SUPPLEMENT THE ORIGINAL BRAKE LEVER APPEARANCE.
- RAISED AND WIDER SURFACE.
- IMPROVED GRIP THANKS TO RIDGED SURFACE.
- SIMPLE MOUNTING WITH TWO SCREWS ON OEM BRAKE PEDAL.


Brake Pedal Extension

MODEL SPECIFIC FITMENT

PREMIUM / FIT TO BIKE

FOOTRESTS

The EVO and ION footrest kits can be specifically adjusted to the rider's individual needs and provide a stable base for riding on the street or off-road. The footrests are made of corrosion-resistant stainless steel, have removable rubber pads and are easy to install.

FEATURES

- MADE OF CORROSION RESISTANT CAST STAINLESS STEEL WITH REMOVABLE RUBBER PAD.
- NON-SLIP DUE TO PROFILED SURFACE STRUCTURE.
- EASY MOUNTING ON THE ORIGINAL FOOTREST MOUNT.
- 36-FOLD ADJUSTABLE VIA GEARS ALLOW ADJUSTMENTS UP, DOWN, FORWARDS, BACKWARDS AND TILT (EVO).
- ADJUSTMENT OF THE ORIGINAL HEIGHT OR LOWERING OF THE FOOTREST BY 15 MM (ION).
- MORE RIDING COMFORT DUE TO LARGE DIMENSIONED CONTACT AREA.



COMFORT ZONE.


ION Footrest Kit

MODEL SPECIFIC FITMENT

EVO Footrest Kit

MODEL SPECIFIC FITMENT

Adjustment:

EVO footrest can be adjusted into 36 positions.

The angle and positioning of the footrest can be adjusted up and down and front to back according to your preference.



PREMIUM / FIT TO BIKE

VARIABLE BAR BACKS

Adjust your handlebars closer to your comfort needs with variable bar backs. Choose between seven different positions at intervals of 5 mm. The variable bar backs are milled and anodised aluminium ready for handlebars with diameters of: 22, 28 and 32 mm. For colour, you have the choice between black, silver and anthracite. Subtle bull logo and SW-MOTEC lettering engravings add the finishing touches to this accessory.

MATERIAL

- CNC-MILLED FROM HIGH-STRENGTH ALUMINIUM ALLOY.
- CORROSION PROTECTION THROUGH ANODISATION.
- AVAILABLE IN BLACK, SILVER OR ANTHRACITE.
- WITH ENGRAVED LOGO AND SW-MOTEC LETTERING.

FUNCTION

- HANDLEBARS CAN BE MOVED IN SEVEN POSITIONS, EACH 5 MILLIMETERS APART.
- AVAILABLE FOR VEHICLES WITH HANDLEBARS WITH 22, 28 OR 32 MILLIMETERS DIAMETER.
- INCREASE BY 25 MM / 28 MM / 30 MM.
- FOR A MORE RELAXED SEATING POSITION.



UNDER CONTROL.



Variable Bar Backs

Aluminium. Silver.



Variable Bar Backs

Aluminium. Black.



Variable Bar Backs

Aluminium. Anthracite.



MODEL SPECIFIC FITMENT



MODEL SPECIFIC FITMENT



MODEL SPECIFIC FITMENT

PREMIUM / FIT TO BIKE

BAR RISERS

universal

Universal bar risers are available in silver or black with height adjustments from 15 to 50 mm. The durable, weather-resistant bar risers fit 22 or 28 mm bars.



FEATURES

- RAISES HANDLEBARS BY 15 - 50 MM.
- FOR A MORE RELAXED SITTING POSITION.
- REPLACES THE ORIGINAL HANDLEBAR CLAMP.
- CNC MILLED ALUMINIUM CONSTRUCTION.

HANDLEBAR HARMONY.



Bar Risers

Aluminium. Black.

Ø= 22mm

H= 15mm: SW-LEH000392200115-B
 H= 20mm: SW-LEH000392200120-B
 H= 25mm: SW-LEH000392200125-B
 H= 30mm: SW-LEH000392200130-B
 H= 50mm: SW-LEH000392200150-B

Ø= 28mm

H= 20mm: SW-LEH000392410020-B
 H= 30mm: SW-LEH000392410030-B

Bar Risers

Aluminium. Silver.

Ø= 22mm

H= 15mm: SW-LEH000392200115-S
 H= 20mm: SW-LEH000392200120-S
 H= 25mm: SW-LEH000392200125-S
 H= 30mm: SW-LEH000392200130-S
 H= 50mm: SW-LEH000392200150-S

Ø= 28mm

H= 20mm: SW-LEH000392410020-S
 H= 30mm: SW-LEH000392410030-S



HANDLEBAR CONVERTER

Fatbar adapter kit

Converts bar mount from 22 mm diameter to 28 mm diameter, with a height increase of 20 mm for added comfort. High-strength aluminium with CNC etching.

PN: SW-LEH00039160-B



PREMIUM / FIT TO BIKE

BAR RISERS

bike specific

Bike-specific bar risers offer the best fit and an integrated appearance. The robust CNC milled aluminium risers offer various height adjustments.

FEATURES

- RAISES HANDLEBARS BY 15 - 50 MM DEPENDING ON MODEL.
- FOR A MORE RELAXED SITTING POSITION.
- REPLACES THE ORIGINAL HANDLEBAR CLAMP.
- CNC MILLED ALUMINIUM CONSTRUCTION.



E.G. Fitment: Ducati



E.G. Fitment: BMW



E.G. Fitment: Honda



E.G. Fitment: Suzuki



E.G. Fitment: Triumph



E.G. Fitment: Harley



PREMIUM / FIT TO BIKE

COMFORT CUSHIONS

Comfort cushions with air are made of durable polyurethane. The comfortable, vibration dampening bench seat supports blood circulation and prevents painful pressure points. The air weaving and breathable spacer fabric reduces heat/sweat build up.



MATERIAL

- SURFACE MADE OF RUGGED, BI-ELASTIC ARTIFICIAL LEATHER FOR EXTRA SITTING COMFORT.
- WATERPROOF POLYURETHANE AIR CUSHION.

FUNCTION

- TRAVELLER COMFORT CUSHIONS ARE AVAILABLE IN THREE STYLES - SUITABLE FOR ALMOST ALL BIKES AND SITTING POSITIONS.
- INTEGRATED VENT ALLOWS FOR VARIABLE AIR FILLING.
- TWO STURDY STRAPS WITH ROK™ STRAPS AND ANTI-SLIP UNDERSIDE FOR PRECISE POSITIONING.
- ANTI-THEFT PROTECTION BY ATTACHMENT UNDER THE SEAT.

PERFECT FIT:

The bi-elastic, robust imitation leather surface provides exceptional seating comfort.

Drop the air volume with the integrated valve for a more direct connection with your motorcycle.



TRAVELLER Rider Cushion

PN: SW-SIK0041010000-B
Size: 30.5 x 30 cm



TRAVELLER Pillion Cushion

PN: SW-SIK0041010100-B
Size: 22 x 30 cm



TRAVELLER Smart Cushion

PN: SW-SIK0041010200-B
Size: 33.5 x 38 cm



PREMIUM / FIT TO BIKE

GPS HOLDER

Bike-specific GPS mounts get installed in the handlebar area to allow instant attachment and removal for GPS or multimedia device. All bike-specific and shock-absorbent GPS mounts are designed to fit handlebars, crossbars or the cockpit area to ensure clear view of instruments.

MATERIAL

- MADE OF BLACK POWDER-COATED STEEL WITH LOCKING MECHANISM MADE OF FIBERGLASS-REINFORCED PLASTIC.

FUNCTION

- REMOVABLE AND VIBRATION-DAMPING.
- EASY MOUNTING ON EXISTING MOUNTING POINTS IN THE COCKPIT, ON THE HANDLEBAR MOUNTING BOLTS, THE HANDLEBAR CENTER BRACE OR OTHER TUBES WITH A DIAMETER OF Ø 10/12 MM.
- PIVOTABLE FOR IDEAL VIEW OF DEVICES.
- RETAINING PLATE WITH UNIVERSAL HOLE PATTERN GIVES THE USUAL GPS MODELS AND PHONE / NAVI CASE AND NAVI CASE PRO DEVICE CASES OR HARD CASES A SECURE HOLD.
- MADE TO FIT EACH BIKE MODEL FOR OPTIMAL POSITIONING.



TIP:

The mounting plate with universal hole pattern holds common navigation device models securely, but the Phone Case or Navi Case device bag can also be easily mounted.



 E.G. Fitment: Ducati



 E.G. Fitment: BMW



 E.G. Fitment: Honda



 E.G. Fitment: CF Moto



 E.G. Fitment: Triumph



 E.G. Fitment: Yamaha

PREMIUM / FIT TO BIKE

UNIVERSAL KITS

Cleverly mount electronic devices like smartphones, GPS devices or GoPros in the cockpit. The 1" ball can be mounted on a M6 or M8 thread, on a mirror thread holder or with a mounting clamp. The mounting clamp is designed for handlebars with a diameter of 22 or 28 mm. T-Lock holder on the clamp arm can attach the Navi Case. T-Lock holder on the clamp arm can attach the Navi Case.



FEATURES

- COMPLETE SET FOR MOUNTING GPS DEVICES, SMARTPHONES OR GOPRO CAMERAS.
- BALLS AND 2" SOCKET ALLOW FOR INDIVIDUAL POSITIONING.
- T-LOCK HOLDER FOR QUICK MOUNTING OF NAVI CASE / PHONE CASE PRO.
- 1" BALL CAN BE MOUNTED ON A M6 OR M8 THREAD, ON THE MIRROR THREAD HOLDER OR WITH A MOUNTING CLAMP.
- MOUNTING CLAMP FOR HANDLEBARS WITH A DIAMETER OF 22 MM, 28 MM OR 1".
- HOLE PATTERN FOR GPS MOUNT IS COMPATIBLE WITH HARDCASES, NAVI CASE PRO AND COMMON GPS DEVICES.

TIP:

The T-Lock receptacle on the back of the Navi Case / Phone Case allows for quick attachment to the Universal Navi Kit. A quarter turn clockwise fixes the Navi Case / Phone Case to the clamp arm.



GPS Mount kit
Navi case
PN: SW-GPS0030835200



GPS Mount kit
Handlebar Clamp 22mm
PN: SW-GPS0030810001-B



GPS Mount kit
Head tube with T-Lock
PN: SW-GPS0030835400



GPS Mount kit
Universal with T-Lock
PN: SW-GPS0030835000



1" Ball kit
Mirror thread mount
PN: SW-CPA00424115



1" Ball kit for head tube
For Ø 12.5-25 mm
PN: SW-CPA0042416000-B



GPS Mount kit
For M8 thread
PN: SW-CPA0042410200-B



GoPro Ball Mount kit
For M8 thread
PN: SW-CPA0042412400-B

PREMIUM / FIT TO BIKE

POWER SUPPLY

Adapters connect directly to the motorcycle battery to allow power supply for electronic devices during the ride. Cigarette lighter socket or DIN power socket are compatible to USB power ports and can be used with standard hardware charging cables. The universal kit includes all components to supply power to the cockpit.



Universal Electric Kit
PN: SW-EMA0010720001-B
Bracket / Lighter / USB port



Double USB port
PN: SW-EMA0010711300
Power supply cable harness



Cigarette Lighter
PN: SW-EMA0010710200
Cable harness



Cigarette Lighter
PN: SW-EMA0010710800
SAE Connector



Double USB port
PN: SW-EMA0010712200
Universal plug



Mini USB Charger
PN: SW-EMA0010710301
12V DIN and lighter socket



Fog light switch
PN: SW-EMA0010712900
Green. 30cm cable.



High beam switch
PN: SW-EMA0010712800
Blue. 30cm cable.



Cockpit Switch
PN: SW-EMA0010711900
30cm Cable length



Lighter bracket M8
PN: SW-EMA0010712300
Holds cigaretter lighter



Lighter bracket M10
PN: SW-EMA0010712400
Holds cigaretter lighter

