



LP0246

**FITTING INSTRUCTIONS FOR LP0246BK LICENCE PLATE BRACKET**  
**HONDA AFRICA TWIN ADVENTURE SPORTS '18-**

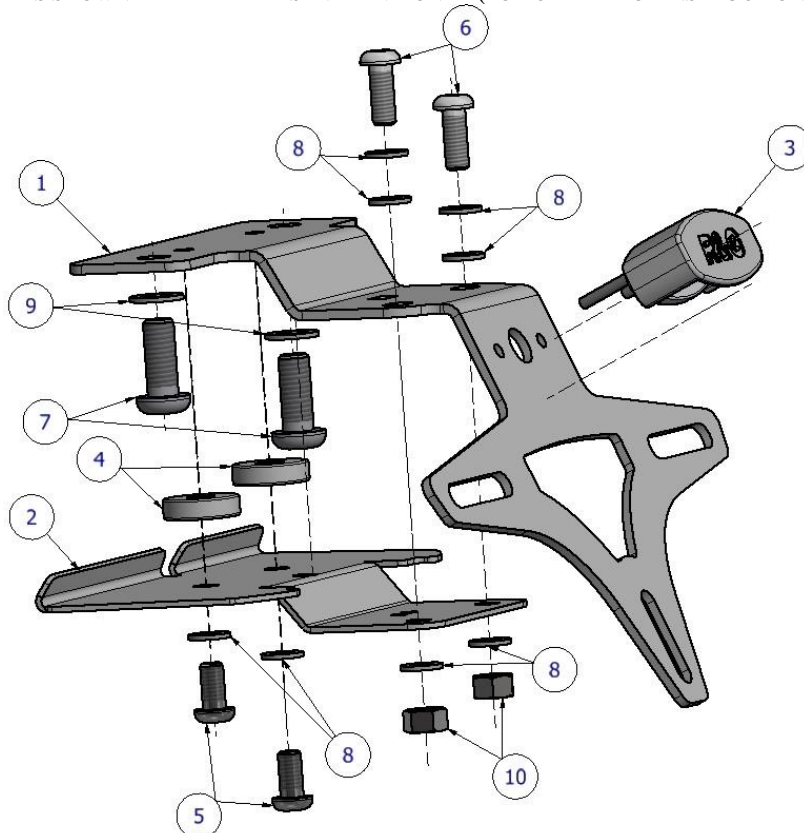
Page | 1



**THIS KIT CONTAINS THE ITEMS PICTURED AND LABELLED BELOW.**  
**DO NOT PROCEED UNTIL YOU ARE SURE ALL PARTS ARE PRESENT.**

Please note that the way the kit is packed does not necessarily represent the way of mounting to the bike.

THE PARTS SHOWN MAY BE REPRESENTATIVE ONLY (FOR CLARITY OF INSTRUCTIONS ONLY).



R&G

Unit 1, Shelley's Lane, East Worldham, Alton, Hampshire, GU34 3AQ  
Tel: +44 (0)1420 89007 Fax: +44 (0)1420 87301 [www.rg-racing.com](http://www.rg-racing.com) Email: [info@rg-racing.com](mailto:info@rg-racing.com)

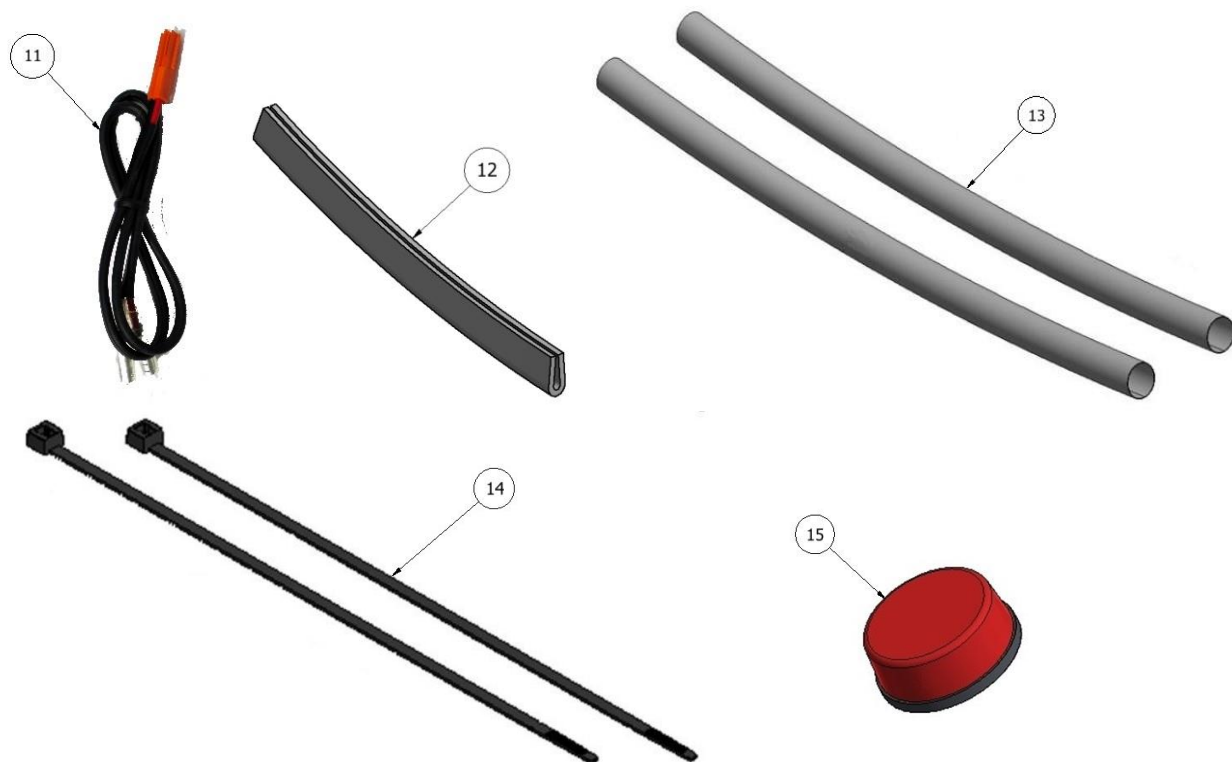


LP0246

### LEGEND

- ITEM 1 = LICENCE PLATE BRACKET (TB0246 PART 1) (x1).  
ITEM 2 = LICENCE PLATE BRACKET COVER (TB0246 PART 2) (x1).  
ITEM 3 = LICENCE PLATE ILLUMINATOR (LA0002) (x1)  
ITEM 4 = 5.2mm LONG SPACER (S1120) (x2)  
ITEM 5 = M6x12mm LONG BUTTON HEAD BOLTS (x2)  
ITEM 6 = M6x16mm LONG BUTTON HEAD BOLTS (x2)  
ITEM 7 = M8x20mm LONG BUTTON HEAD BOLTS (x2)  
ITEM 8 = M6 WASHERS (x8).  
ITEM 9 = M8 WASHERS (x2).  
ITEM 10 = M6 NYLOC NUTS (x2)  
ITEM 11 = LICENCE PLATE ILLUMINATOR CONNECTOR (CON0009) (x1).  
ITEM 12 = 200MM LENGTH OF RUBBER U-CHANNEL (x1)  
ITEM 13 = 150MM LENGTH OF HEATSHRINK (x2).  
ITEM 14 = SMALL CABLE TIES (x2).  
ITEM 15 = REFLECTOR (x1).

Page | 2



### TOOLS REQUIRED

- Set of metric allen keys
- Metric socket set.

### MAXIMUM TORQUE SETTINGS

- M5 Bolt = 12 Nm
- M6 Bolt = 15 Nm
- M8 Bolt = 20Nm

R&G



LP0246



Picture 1



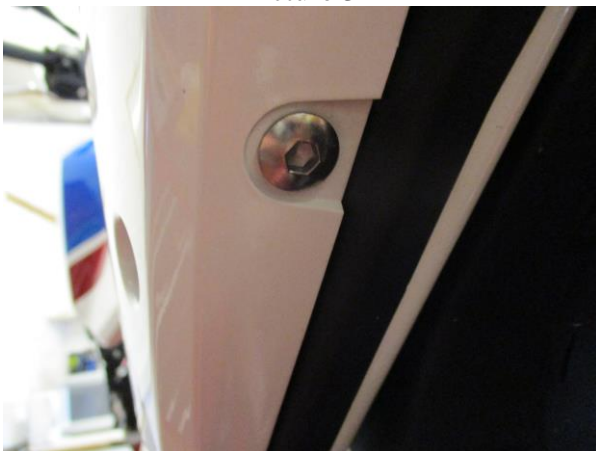
Picture 2



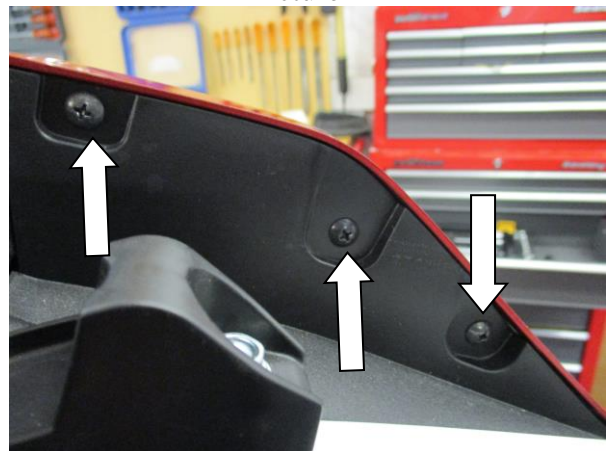
Picture 3



Picture 4



Picture 5



Picture 6



LP0246



Picture 7



Picture 8



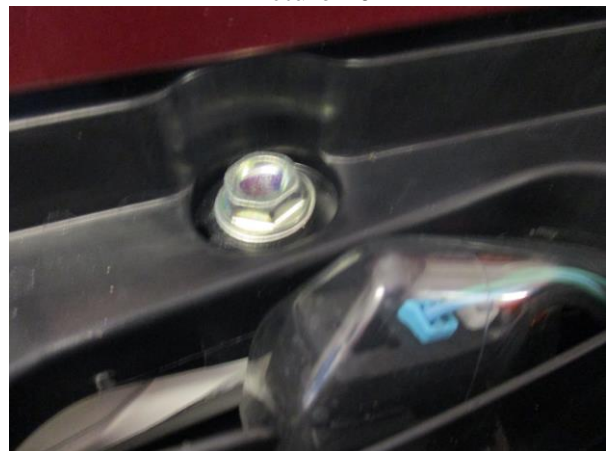
Picture 9



Picture 10



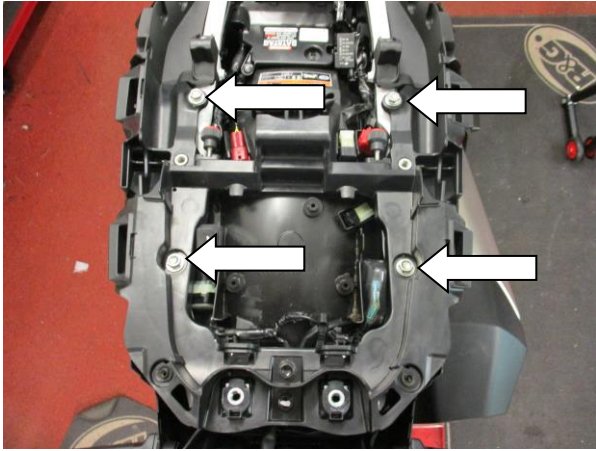
Picture 11



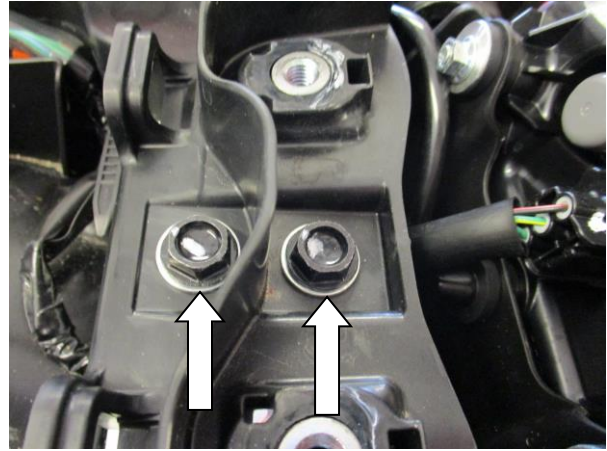
Picture 12



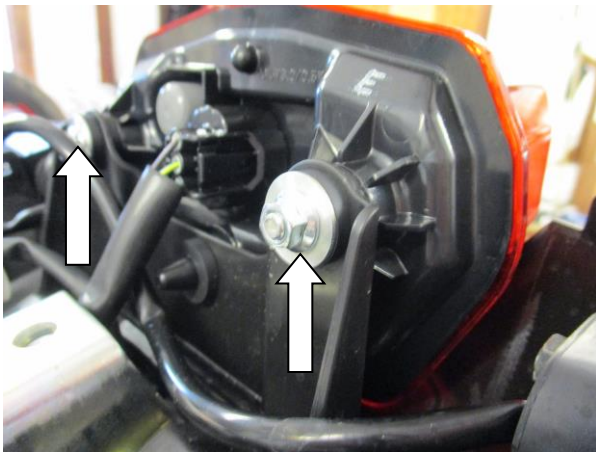
LP0246



Picture 13



Picture 14



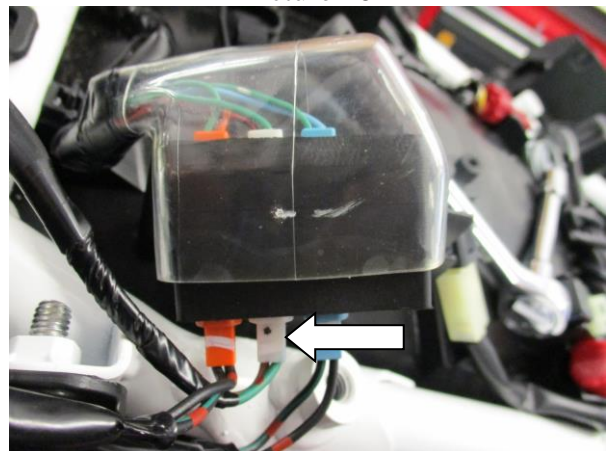
Picture 15



Picture 16



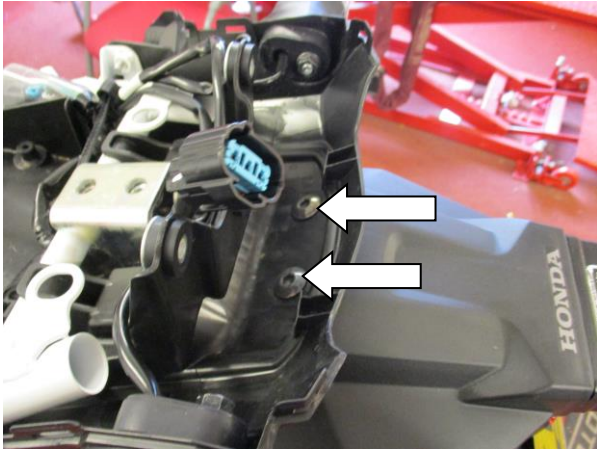
Picture 17



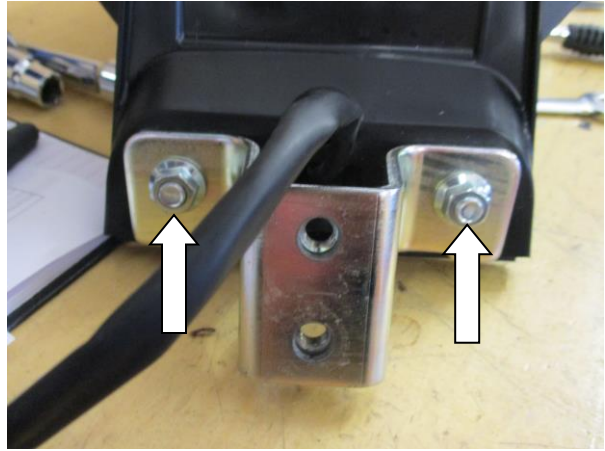
Picture 18



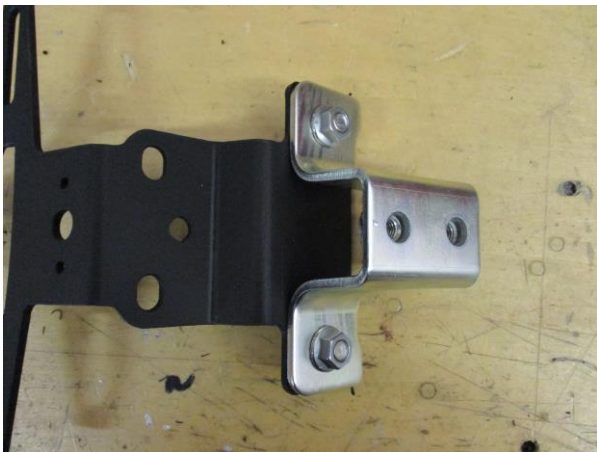
LP0246



Picture 19



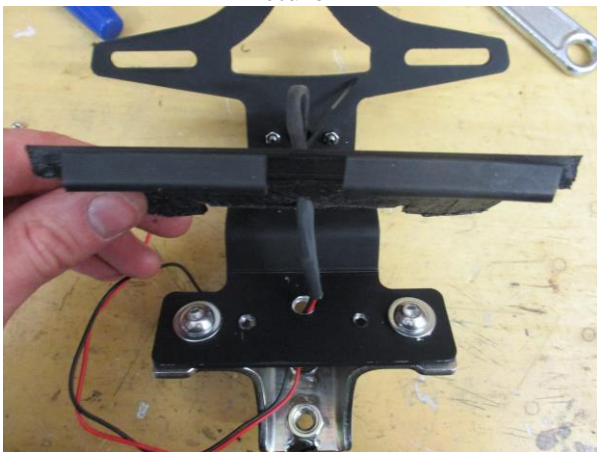
Picture 20



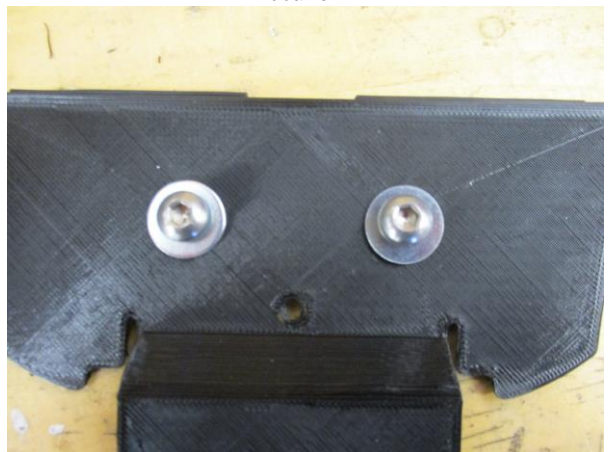
Picture 21



Picture 22



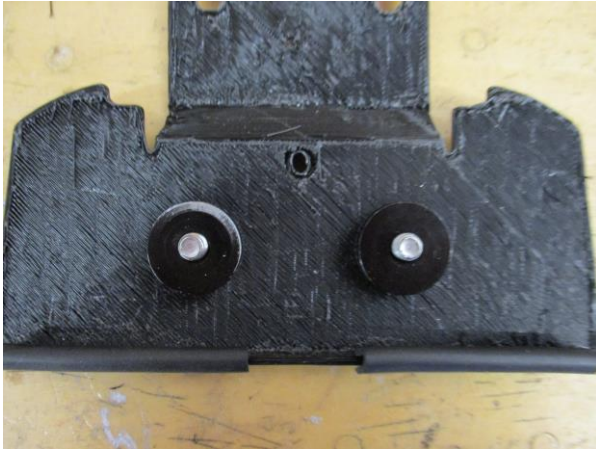
Picture 23



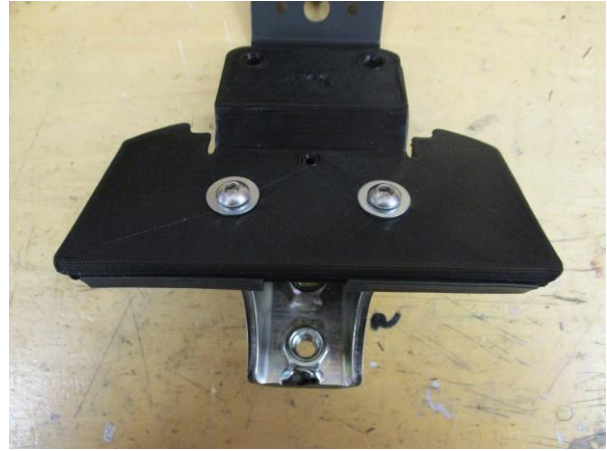
Picture 24



LP0246



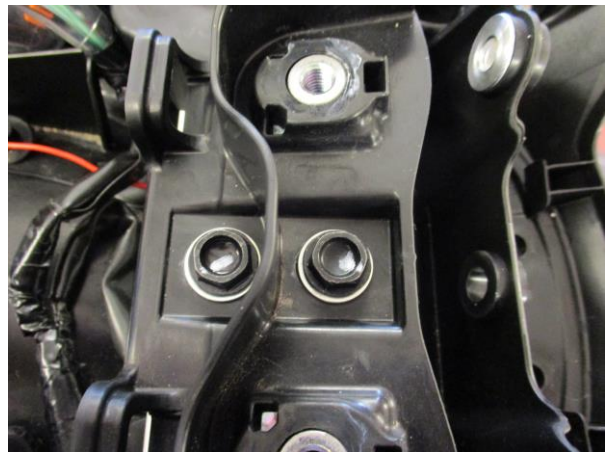
Picture 25



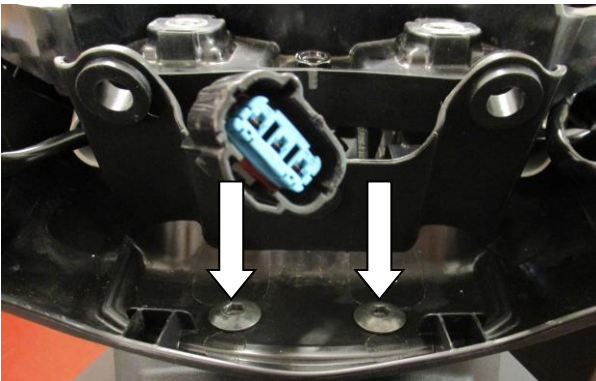
Picture 26



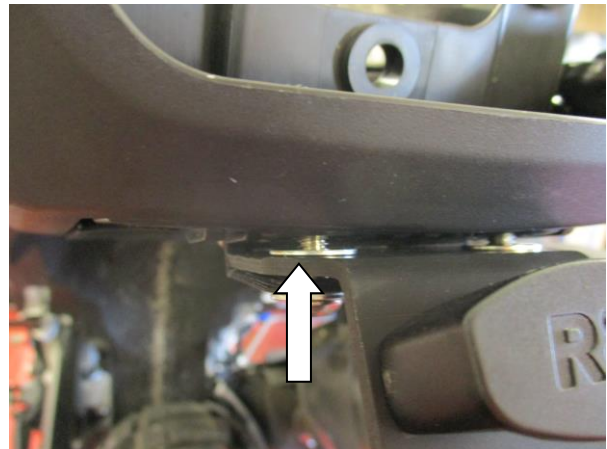
Picture 27



Picture 28



Picture 29



Picture 30



LP0246



Picture 31

### **FITTING INSTRUCTIONS**

- To fit the R&G tail tidy, remove the main seat using the key and the pillion seat by removing the two hand operated bolts shown in picture 1.
- Remove the bolts shown in pictures 2 and 3 from both sides and then remove the pillion handle/luggage rack.
- From both sides of the bike remove the bolts shown in pictures 4, 5 and 6 and 7.
- From the right side of the bike remove the bolts shown in pictures 8 and 9 and then remove the cover panel.
- From the right side remove the bolt shown in picture 10
- Remove the rear fairing panels from both sides by gently releasing the clips around the outside using a small amount of pressure.
- Remove the 4 bolts shown in picture 13, these bolts are also shown in picture 11 and 12.
- Remove the 2 bolts shown in picture 14.
- The seat mounting bracket can now be removed to gain better access to the wiring connectors.
- Remove the nuts on the back of the tail light and unplug the connector shown in picture 15.
- Release the clip on the tail light shown in picture 16 by pulling the tail light up as shown in picture 17.
- Remove the white connector shown in picture 18.
- Remove the two bolts shown in picture 19.
- Remove the nuts and bolts shown in picture 20 and remove the metal bracket.
- Secure the metal bracket to the licence plate bracket (item 1) using the M8 bolts (item 7), M8 washers (item 9) and the nuts removed in picture 20.
- Protect the wiring of the licence plate illuminator (item 3) with a length of heatshrink (item 13) as shown in picture 22.
- Secure the licence plate illuminator (item 3) to the licence plate bracket (item 1) using the supplied nuts and washers. Please note you will have to fit the light shroud and use a small amount of adhesive to hold it in position.
- Pass the licence plate illuminator (item 3) wiring through the licence plate bracket cover (item 2) and through the central hole in the licence plate bracket (item 1) as shown in picture 23.
- Cut and secure the rubber u-channel (item 12) as shown in picture 23.
- Secure the licence plate illuminator wiring to the licence plate bracket cover plate (item 2) using the included cable tie (item 14). Ensure the head of the cable tie sits on the back of the cover plate so it will sit inside the recess on the licence plate bracket (item 1). Trim the cable tie once fitted.
- Secure the licence plate bracket cover (item 2) to the licence plate bracket (item 1) using the two 12mm M6 bolts (item 5), two M6 washers (item 8) and two 5.2mm spacers (item 4) as shown in pictures 24, 25 and 26. The spacers sit between the licence plate bracket and the cover.

R&G





LP0246

- Offer the licence plate bracket assembly up to the bike and pass the tail light connector through the metal bracket as shown in picture 27.
- Pass the licence plate illuminator wiring into the bike and connect the licence plate illuminator connector (item 11) using the bullet connectors.
- Replace the seat mounting bracket and secure the licence plate bracket assembly using the two original bolts as shown in picture 28.
- Connect the licence plate illuminator connector (item 11) to the bike wiring loom in the same way it was removed in picture 18.
- Place one M6 washer (item 8) onto each 16mm M6 bolt (item 6) and put these through the rear mounting holes of the tail shown in picture 29. Place one M6 washer (item 8) on both bolts between the licence plate bracket and the plastic tail panel as shown in picture 30. Secure the bolts using M6 washers (item 8) and the M6 nyloc nuts (item 10).
- Replace the tail light in the same way it was removed in picture 17 and reconnect the wiring connector.
- Test the licence plate illuminator and tail light for correct function.
- If the licence plate illuminator fails swap the connectors.
- Replace the seat mounting bracket bolts, rear fairing panels and bolts and pillion handle/luggage rack and bolts.
- Replace the main and pillion seats.
- Depending on local laws, attach enclosed reflector (item 15) in an appropriate location.
- Test the license plate illuminator and all lights before riding.

Page | 9

ISSUE 21/06/2018 (HB)

**Digital copies of these instructions are available to download from [www.rg-racing.com](http://www.rg-racing.com)**

#### CONSUMER NOTICE

The catalogue description and any exhibition of samples are only broad indications of the Products and R&G may make design changes which do not diminish their performance or visual appeal and supplying them in such state shall conform to the order. The Buyer acknowledges no representation or warranty (other than as to title) has been given or will apply to the Products other than those in R&G's order or confirmation and the Buyer confirms it has chosen the Products as being of merchantable quality and suitable for its particular purposes. Where R&G fits the Products or undertakes other services it shall exercise reasonable skill and care and rectify any fault free of charge unless the workmanship has been disturbed. The Buyer is responsible for ensuring that the warranty on the motorcycle is not affected by the fitting of the Products. On return of any defective Products R&G shall at its option either supply a replacement or refund the purchase money but shall not be liable if the Products have been modified or used or maintained otherwise than in accordance with R&G's or manufacturer's instructions and good engineering practice or if the defect arises from accident or neglect. Other than identified above and subject to R&G not limiting its liability for causing death and personal injury, it shall not be liable for indirect or consequential loss and otherwise its liability shall be limited to the amounts paid by the Buyer for the Products or the fitting or service concerned. These terms do not affect the Buyer's statutory rights.

#### R&G RETURNS POLICY (NON-FAULTY GOODS)

Returns must be pre-authorized (if not pre-authorized the return will be rejected). Goods may only be returned direct to us if they were purchased direct from us (customer must prove if necessary). Otherwise to be returned to original vendor. Goods must be in re-sellable condition, in the opinion of R&G. All returns are subject to a 25% restocking and handling fee (25% of the gross value exc. P&P – at the prevailing price at time of purchase). The customer must pay any and all carriage charges. No returns of discontinued products, unless within 14 days of purchase. This policy does not affect your statutory rights and does not refer to faulty goods.

R&G

Unit 1, Shelley's Lane, East Worldham, Alton, Hampshire, GU34 3AQ  
Tel: +44 (0)1420 89007 Fax: +44 (0)1420 87301 [www.rg-racing.com](http://www.rg-racing.com) Email: [info@rg-racing.com](mailto:info@rg-racing.com)



LP0246

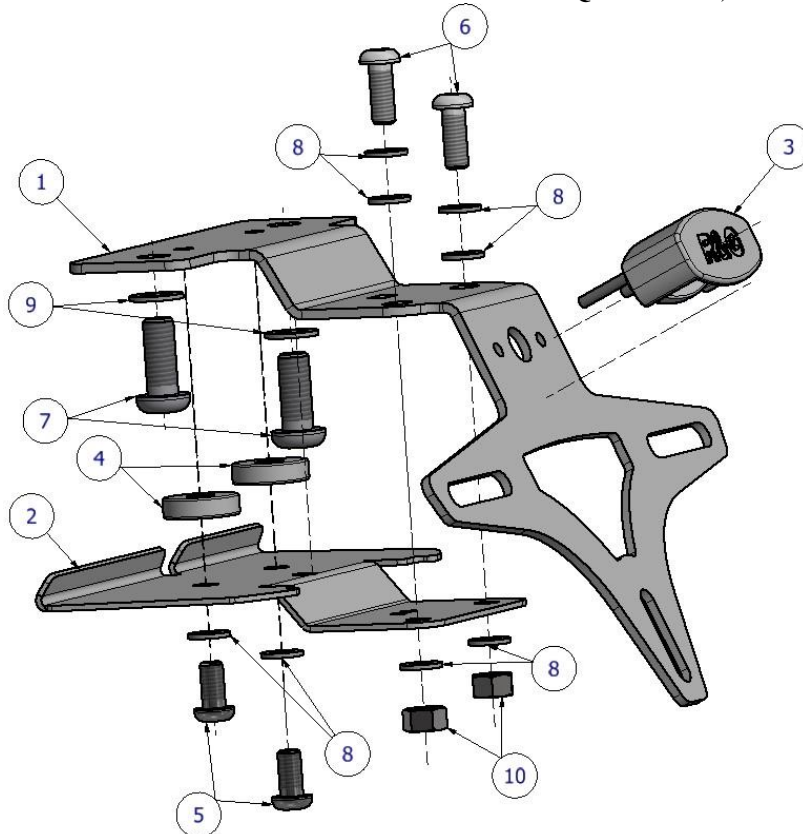
**NOTICE DE MONTAGE LP0246BK SUPPORT DE PLAQUE**  
**HONDA AFRICA TWIN ADVENTURE SPORTS '18-**

Page | 10



**Le kit contient les articles exposés ci-dessous, vérifier que toutes les pièces soient présentes avant de procéder au montage.**

**La façon dont le kit est emballé ne correspond pas forcément à la façon de monter les pièces sur la moto.**  
**LES PARTIES PRESENTES PEUVENT ETRE UNIQUEMENT REPRESENTATIVES (POUR LA CLARTE DES INSTRUCTIONS UNIQUEMENT).**



R&G

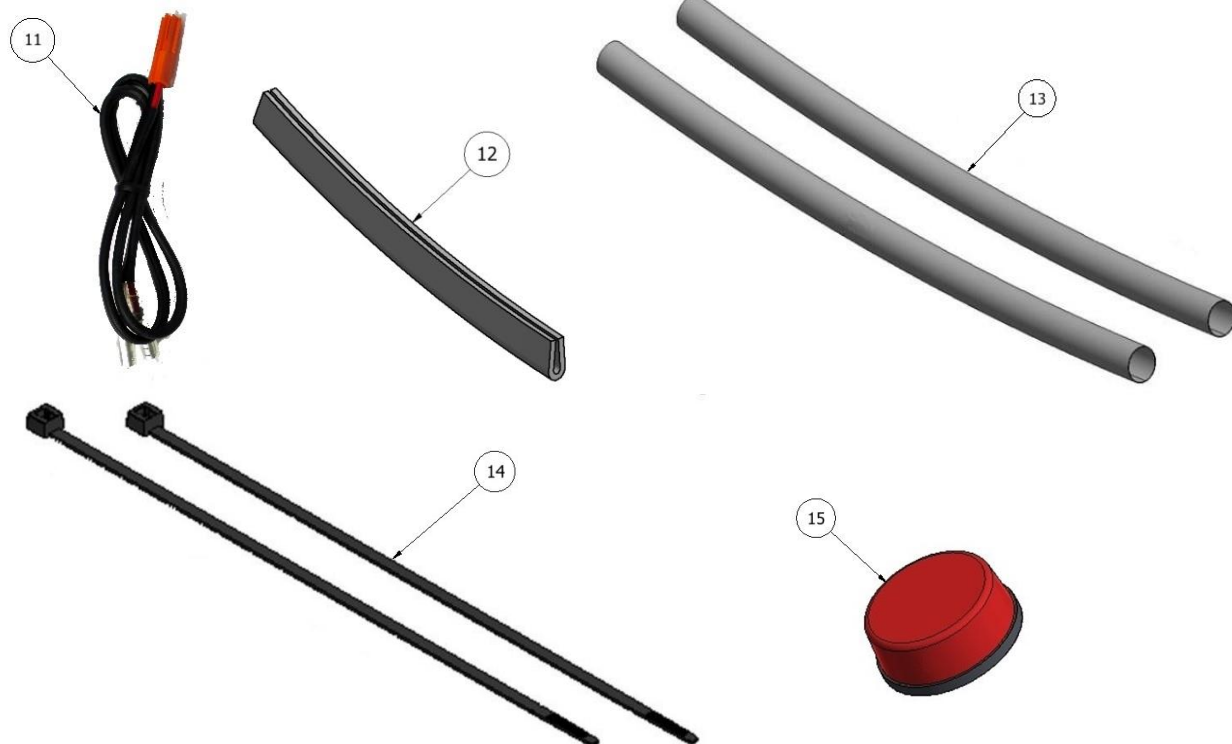
Unit 1, Shelley's Lane, East Worldham, Alton, Hampshire, GU34 3AQ  
Tel: +44 (0)1420 89007 Fax: +44 (0)1420 87301 [www.rg-racing.com](http://www.rg-racing.com) Email: [info@rg-racing.com](mailto:info@rg-racing.com)



LP0246

## LÉGENDE

- ARTICLE 1 = SUPPORT DE PLAQUE (TB0246 PARTIE 1) (x1).  
ARTICLE 2 = CACHE SUPPORT DE PLAQUE (TB0246 PARTIE 2) (x1).  
ARTICLE 3 = FEU DE PLAQUE (LA0002) (x1)  
ARTICLE 4 = 5.2mm ENTRETOISE (S1120) (x2)  
ARTICLE 5 = M6x12mm BOULONS (x2)  
ARTICLE 6 = M6x16mm BOULONS (x2)  
ARTICLE 7 = M8x20mm BOULONS (x2)  
ARTICLE 8 = M6 RONDELLES (x8).  
ARTICLE 9 = M8 RONDELLES (x2).  
ARTICLE 10 = M6 ÉCROUS (x2)  
ARTICLE 11 = CONNECTEUR DE FEU DE PLAQUE (CON0009) (x1).  
ARTICLE 12 = 200MM LONGUEUR DU CAOUTCHOUC U-CHAINE (x1)  
ARTICLE 13 = 150MM LONGUEUR DE MANCHON THERMO RÉTRACTABLE (x2).  
ARTICLE 14 = PETITS COLLIERS DE SERRAGE (x2).  
ARTICLE 15 = RÉFLECTEUR (x1).



## OUTILS REQUIS

- Clés Allen
- Clé métrique.

## VALEURS DE SERRAGE

- M5 BOULON = 12Nm
- M6 BOULON = 15Nm

R&G



LP0246

- M8 BOULON = 20 Nm

## **NOTICE DE MONTAGE**

- Pour monter le support de plaque R&G, commencez par enlever le siège à l'aide de la clé et le siège passage en enlevant les 2 boulons indiqués sur la photo 1.
- Enlever les boulons indiqués sur les photos 2 et 3 des 2 côtés puis enlever l'attache passage/support bagage.
- Des 2 côtés de la moto, enlever les boulons indiqués sur les photos 4, 5, 6 et 7.
- Du côté droit de la moto, enlever les boulons indiqués sur les photos 8 et 9 puis enlever le panneau cache.
- Du côté droit, enlever le boulon indiqué sur la photo 10
- Enlever les panneaux de carénage arrière des 2 côtés en libérant les clips à l'extérieur en pressant légèrement.
- Enlever les 4 boulons indiqués sur la photo 13, ces boulons sont aussi visibles sur les photos 11 et 12.
- Enlever les 2 boulons visibles sur la photo 14.
- Le support de fixation du siège peut maintenant être enlevé pour pouvoir mieux accéder aux connecteurs de fils.
- Enlever les écrous au bas du feu de plaque puis débrancher le connecteur, voir photo 15.
- Libérer le clip du feu de plaque, voir photo 16 en tirant le feu de plaque, voir photo 17.
- Enlever le connecteur blanc, voir photo 18.
- Enlever les 2 boulons, voir photo 19.
- Enlever les écrous et boulons, voir photo 20 puis enlever le support métallique.
- Fixer le support métallique du support de plaque (article 1) en utilisant les boulons M8 (article 7), rondelles M8 (article 9) et les écrous enlevés sur la photo 20.
- Protéger le fil de feu de plaque (article 3) à l'aide d'une longueur de manchon thermo rétractable (article 13) voir photo 22.
- Fixer le feu de plaque (article 3) au support de plaque (article 1) en utilisant les écrous et rondelles fournis. S'il vous plait, notez que vous devrez monter le linceul de feu et utiliser un peu d'adhésif pour fixer la position.
- Passer le fil de connecteur de feu de plaque (article 3) dans le cache de support de plaque (article 2) et dans le trou central du support de plaque (article 1), voir photo 23.
- Couper et fixer la longueur de caoutchouc U-chaine (article 12), voir photo 23.
- Fixer le fil de feu de plaque sur la plaque de cache du support de plaque (article 2) en utilisant le collier de serrage incluse (article 14). Veiller à ce que la tête du câble se place à l'arrière de plaque de cache de façon à ce qu'elle se place dans le creux du support de plaque (article 1). Couper la tête de câble une fois serré.
- Fixer le cache de support de plaque (article 2) sur le support de plaque (article 1) en utilisant les 2 boulons M6 12mm (article 5), 2 rondelles M6 (article 8) et 2 entretoises 5.2mm (article 4) voir photos 24, 25 et 26. Les entretoises se placent entre le support de plaque et le cache.
- Monter l'assemblage de support de plaque sur la moto et passer le connecteur de feu à travers le support métallique, voir photo 27.
- Passer le fil de feu de plaque sur la moto et connecter le connecteur de feu de plaque (article 11) en utilisant les connecteurs.
- Replacer le support de fixation du siège puis fixer l'assemblage de support de plaque en utilisant les 2 boulons d'origine, voir photo 28.
- Connecter le connecteur de feu de plaque (article 11) sur le faisceau de câble de la moto en procédant à l'inverse du montage, voir photo 18.
- Placer une rondelle M6 (article 8) sur chaque boulon 16mm (article 6) puis passez les dans les trous de fixation arrière du support, voir photo 29. Placer une rondelle M6 (article 8) sur les 2 boulons entre le support de plaque et le panneau plastique du support de plaque, voir photo 30. Fixer les boulons en utilisant les rondelles M6 (article 8) et écrous M6 (article 10).
- Replacer le feu de plaque en procédant à l'inverse du montage, voir photo 17. Puis, reconnecter le connecteur de fil.



LP0246

- Tester le feu de plaque et le feu de support.
- Si le feu de plaque ne fonctionne pas, tournez les connecteurs.
- Remplacer les boulons de fixation du support de siège, les panneaux de carénage arrière et les boulons, puis l'attache passager/support bagages et boulons.
- Remplacer le siège principal et le siège passager.
- Selon les lois locales, attacher le réflecteur rouge (article 15) à l'endroit approprié.
- **Tester le feu de plaque, les clignotants, ainsi que l'ensemble des feux avant de prendre la route.**

Page | 13

ISSUE 21/06/2018 (HB)

**Notice disponible au téléchargement sur [www.rg-racing.com](http://www.rg-racing.com)**

#### CONSUMER NOTICE

The catalogue description and any exhibition of samples are only broad indications of the Products and R&G may make design changes which do not diminish their performance or visual appeal and supplying them in such state shall conform to the order. The Buyer acknowledges no representation or warranty (other than as to title) has been given or will apply to the Products other than those in R&G's order or confirmation and the Buyer confirms it has chosen the Products as being of merchantable quality and suitable for its particular purposes. Where R&G fits the Products or undertakes other services it shall exercise reasonable skill and care and rectify any fault free of charge unless the workmanship has been disturbed. The Buyer is responsible for ensuring that the warranty on the motorcycle is not affected by the fitting of the Products. On return of any defective Products R&G shall at its option either supply a replacement or refund the purchase money but shall not be liable if the Products have been modified or used or maintained otherwise than in accordance with R&G's or manufacturer's instructions and good engineering practice or if the defect arises from accident or neglect. Other than identified above and subject to R&G not limiting its liability for causing death and personal injury, it shall not be liable for indirect or consequential loss and otherwise its liability shall be limited to the amounts paid by the Buyer for the Products or the fitting or service concerned. These terms do not affect the Buyer's statutory rights.

#### R&G RETURNS POLICY (NON-FAULTY GOODS)

Returns must be pre-authorised (if not pre-authorised the return will be rejected). Goods may only be returned direct to us if they were purchased direct from us (customer must prove if necessary). Otherwise to be returned to original vendor. Goods must be in re-sellable condition, in the opinion of R&G. All returns are subject to a 25% restocking and handling fee (25% of the gross value exc. P&P – at the prevailing price at time of purchase). The customer must pay any and all carriage charges. No returns of discontinued products, unless within 14 days of purchase. This policy does not affect your statutory rights and does not refer to faulty goods.

R&G

Unit 1, Shelley's Lane, East Worldham, Alton, Hampshire, GU34 3AQ

Tel: +44 (0)1420 89007 Fax: +44 (0)1420 87301 [www.rg-racing.com](http://www.rg-racing.com) Email: [info@rg-racing.com](mailto:info@rg-racing.com)



LP0246

**MONTAGEANLEITUNG FÜR LP0246BK KENNZEICHENHALTER  
HONDA AFRICA TWIN ADVENTURE SPORTS '18-**

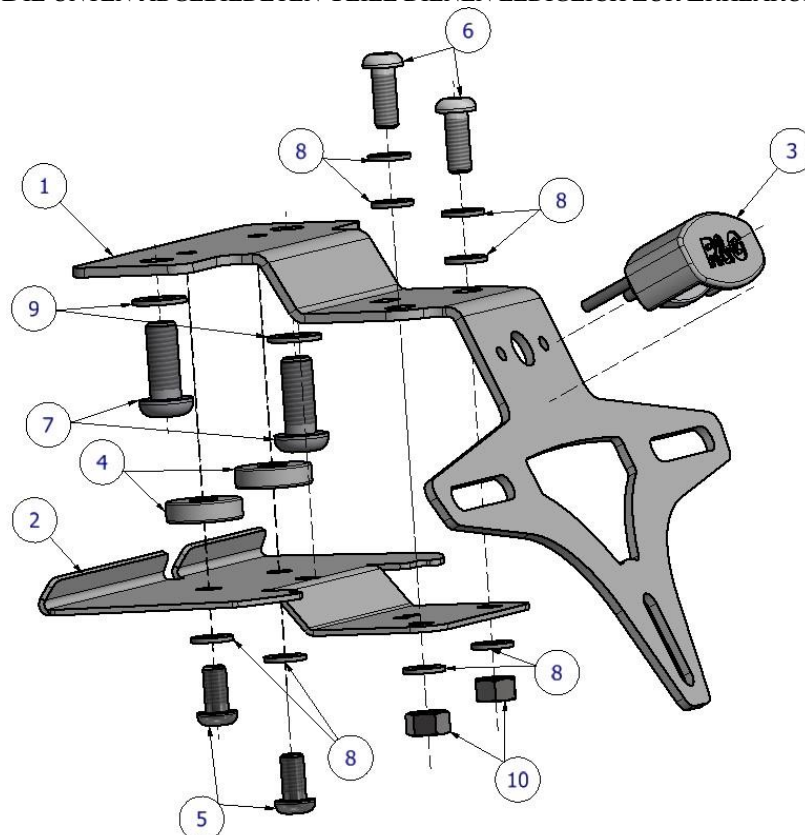
Page | 14



**ALLE KIT-TEILE SIND UNTEN ABGEBILDET UND GEKENNZEICHNET. BEVOR SIE MIT DER MONTAGE BEGINNEN, ÜBERPRÜFEN SIE, DASS ALLE TEILE VORHANDEN SIND.**

**Hinweis: Die Verpackung der Teile stellt nicht die Reihenfolge der Montage dar.**

DIE UNTEN ABGEBILDETEN TEILE DIENEN LEDIGLICH ZUR ERKLÄRUNG



R&G

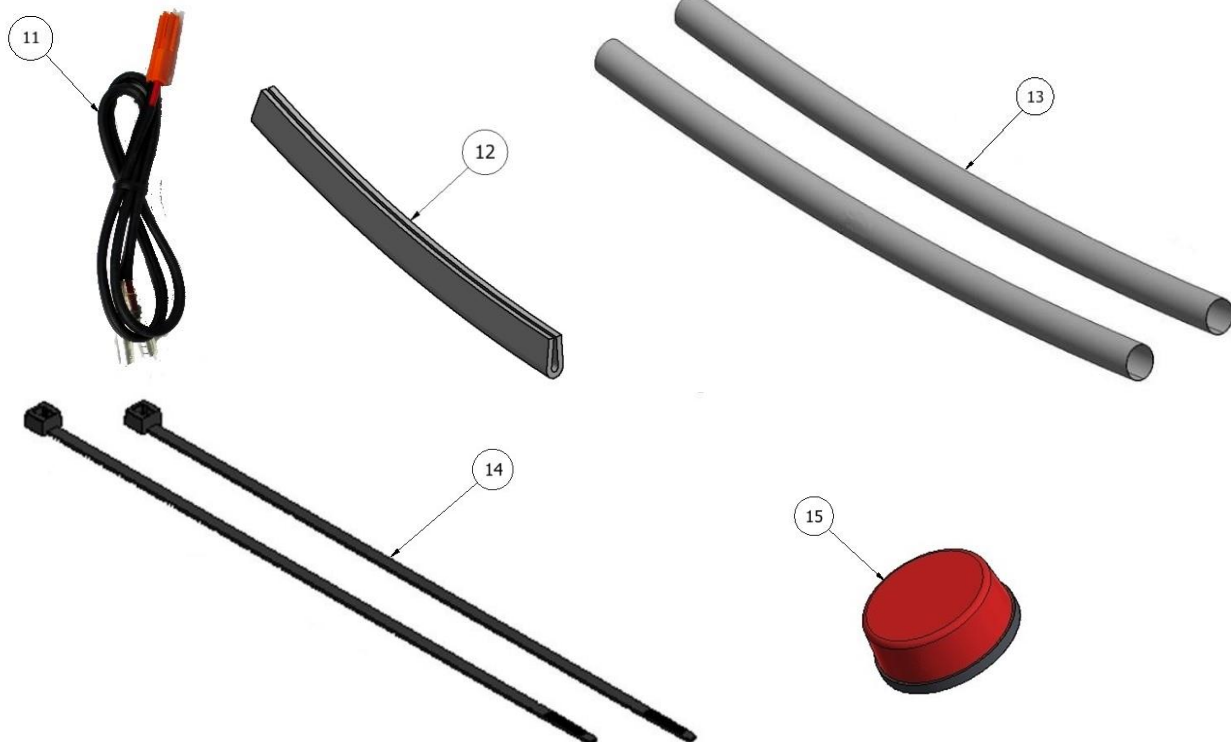
Unit 1, Shelley's Lane, East Worldham, Alton, Hampshire, GU34 3AQ  
Tel: +44 (0)1420 89007 Fax: +44 (0)1420 87301 [www.rg-racing.com](http://www.rg-racing.com) Email: [info@rg-racing.com](mailto:info@rg-racing.com)



LP0246

### LIEFERUMFANG

- ARTIKEL 1 = KENNZEICHENHALTER (TB0246 TEIL 1) (x1)  
ARTIKEL 2 = KENNZEICHENHALTER ABDECKUNG (TB0246 TEIL 2) (x1)  
ARTIKEL 3 = KENNZEICHENBELEUCHTUNG (LA0002) (x1)  
ARTIKEL 4 = 5,2mm DISTANZHALTER (S1120) (x2)  
ARTIKEL 5 = M6x12mm INBUSSCHRAUBEN (x2)  
ARTIKEL 6 = M6x16mm INBUSSCHRAUBEN (x2)  
ARTIKEL 7 = M8x20mm INBUSSCHRAUBEN (x2)  
ARTIKEL 8 = M6 UNTERLEGSSCHEIBE (x8)  
ARTIKEL 9 = M8 UNTERLEGSSCHEIBE (x2)  
ARTIKEL 10 = M6 SELBSTSICHERNDE MUTTER (x2)  
ARTIKEL 11 = VERBINDUNG FÜR DIE KENNZEICHENBELEUCHTUNG (CON0009) (x1)  
ARTIKEL 12 = 200MM KANTENSCHUTZ (x1)  
ARTIKEL 13 = 150MM SCHRUMPFSCHLAUCH (x2)  
ARTIKEL 14 = KLEINE KABELBINDER (x2)  
ARTIKEL 15 = RÜCKSTRAHLER (x1)



### SIE BENÖTIGEN FOLGENDES WERKZEUG

- Satz Inbusschlüssel
- Satz Steckschlüssel

### MAX. ANZUGSDREHMOMENTE:

- M5 SCHRAUBE = 12Nm  
M6 SCHRAUBE = 15Nm  
M8 SCHRAUBE = 20Nm

R&G



LP0246

## **MONTAGEANLEITUNG**

- Um den R&G Kennzeichenhalter montieren zu können, entfernen Sie den Sitz (Sie benötigen hierfür den Schlüssel) und danach den Soziussitz (die zwei Schrauben entfernen – siehe Abbildung 1).
- Entfernen Sie die Schrauben an beiden Seiten, die in den Abbildungen 2 und 3 abgebildet sind, und entfernen Sie die Haltegriffe/den Gepäckträger.
- Entfernen Sie die Schrauben an beiden Seiten des Motorrades, die in den Abbildungen 4, 5 und 6 und 7 abgebildet sind.
- Entfernen Sie die Schrauben an der rechten Seite des Motorrades (siehe Abbildungen 8 und 9), dann entfernen Sie das Verkleidungsteil.
- Entfernen Sie die Schraube an der rechten Seite, die in Abbildung 10 abgebildet ist.
- Entfernen Sie die hinteren Verkleidungsteile an beiden Seiten, indem Sie die Clips an der Außenseite mit leichtem Druck lösen.
- Entfernen Sie die 4 Schrauben, die in Abbildung 13 abgebildet sind – diese Schrauben sind auch in den Abbildungen 11 und 12 abgebildet.
- Entfernen Sie die 2 Schrauben, die in Abbildung 14 abgebildet sind.
- Die Montagehalterung für den Sitz kann nun entfernt werden, um somit einen besseren Zugang zu den Kabelverbindungen zu ermöglichen.
- Entfernen Sie die Muttern hinten am Rücklicht und trennen Sie den Steckverbinder, der in Abbildung 15 gekennzeichnet ist.
- Lösen Sie den Clip an der Rückbeleuchtung (siehe Abbildung 16), indem Sie die Rückbeleuchtung nach oben ziehen – siehe Abbildung 17.
- Entfernen Sie den weißen Steckverbinder, der in Abbildung 18 abgebildet ist.
- Entfernen Sie die zwei Schrauben, die in Abbildung 19 abgebildet sind.
- Entfernen Sie die Muttern und Schrauben, die in Abbildung 20 abgebildet sind und entfernen Sie die Metallhalterung.
- Die Metallhalterung am Kennzeichenhalter (Artikel 1) befestigen mit den M8 Schrauben (Artikel 7), M8 Unterlegscheiben (Artikel 9) und den zuvor entfernten Muttern (Abbildung 20).
- Den mitgelieferten Schrumpfschlauch (Artikel 13) anbringen, um die Kabel für die Kennzeichenbeleuchtung zu schützen – siehe Abbildung 22.
- Die Kennzeichenbeleuchtung (Artikel 3) mit den mitgelieferten Muttern und Unterlegscheiben am Kennzeichenhalter (Artikel 1) befestigen. Bitte beachten Sie, dass etwas Sekundenkleber benötigt wird, um die Lichtabdeckung in Position zu befestigen.
- Die Kabel für die Kennzeichenbeleuchtung (Artikel 3) durch die Abdeckung für den Kennzeichenhalter (Artikel 2) und durch die mittige Öffnung im Kennzeichenhalter führen wie in Abbildung 12 abgebildet.
- Den Kantenschutz aus Gummi schneiden und befestigen (Artikel 12) – siehe Abbildung 23.
- Befestigen Sie die Kabel für die Kennzeichenbeleuchtung an der Abdeckung (Artikel 2) mit dem mitgelieferten Kabelbinder (Artikel 14). Bitte darauf achten, dass das Verschlussstück des Kabelbinders an der Rückseite der Abdeckung positioniert ist, so dass es in der Vertiefung des Kennzeichenhalters (Artikel 1) sitzt. Den Kabelbinder nach der Montage kürzen.
- Die Kennzeichenhalter-Abdeckung (Artikel 2) am Kennzeichenhalter (Artikel 1) befestigen mit den zwei 12mm M6 Schrauben (Artikel 5), zwei M6 Unterlegscheiben (Artikel 8) und zwei 5.2mm Distanzhaltern (Artikel 4) wie in den Abbildungen 24, 25 und 26 abgebildet. Die Distanzhalter sind zwischen dem Kennzeichenhalter und der Abdeckung positioniert.
- Die Kennzeichenhalter-Einheit ans Motorrad ansetzen und den Verbinder für die Kennzeichenbeleuchtung durch die Metallhalterung führen – siehe Abbildung 27.





LP0246

- Die Kabel für die Kennzeichenbeleuchtung ins Motorrad einführen und die Verbindung für die Kennzeichenbeleuchtung (Artikel 11) mit den Kabelverbindern verbinden.
- Die Montagehalterung für den Sitz wieder anbauen und die Kennzeichenhalter-Einheit mit den zwei Originalschrauben befestigen –siehe Abbildung 28.
- Verbinden Sie die Verbindung für die Kennzeichenbeleuchtung (Artikel 11) mit dem Kabelbaum auf die gleiche Weise wie zuvor bei der Entfernung (Abbildung 18).
- Je eine M6 Unterlegscheibe (Artikel 8) an den 16mm M6 Schrauben (Artikel 6) anbringen, und diese durch die hinteren Montageöffnungen des Kennzeichenhalters führen – siehe Abbildung 29. Eine M6 Unterlegscheibe (Artikel 8) an beiden Schrauben zwischen dem Kennzeichenhalter und dem Kunststoffverkleidungsteil anbringen, wie in Abbildung 30 abgebildet. Die Schrauben mit den M6 Unterlegscheiben (Artikel 8) und den M6 selbstsichernden Muttern (Artikel 10) befestigen.
- Das Rücklicht wie bei der Entfernung wieder anbringen und den Kabelverbinder wieder anschießen.
- Überprüfen Sie, dass die Kennzeichenbeleuchtung und das Rücklicht ordnungsgemäß funktionieren.
- Wenn die Kennzeichenbeleuchtung nicht funktionieren sollte, tauschen Sie die Kabelverbinder untereinander.
- Montieren Sie die Schrauben für die Montagehaltung, die hinteren Verkleidungsteile mit den dazugehörigen Schrauben sowie die Haltegriffe/Gepäckträger wieder.
- Montieren Sie den Fahrer- und Beifahrersitz wieder.
- Entsprechend der gesetzlichen Vorschriften, den mitgelieferten Rückstrahler (Artikel 15) anbringen.
- Überprüfen Sie die Funktion der Beleuchtung (Blinker und Kennzeichenhalter-Beleuchtung) vor Gebrauch des Fahrzeuges.

Page | 17

AUSGABE 21/06/2018 (HB)

**Eine digitale Version dieser Montageanleitung kann auf folgender Seite heruntergeladen werden:**

**[www.rg-racing.com](http://www.rg-racing.com)**

#### CONSUMER NOTICE

The catalogue description and any exhibition of samples are only broad indications of the Products and R&G may make design changes which do not diminish their performance or visual appeal and supplying them in such state shall conform to the order. The Buyer acknowledges no representation or warranty (other than as to title) has been given or will apply to the Products other than those in R&G's order or confirmation and the Buyer confirms it has chosen the Products as being of merchantable quality and suitable for its particular purposes. Where R&G fits the Products or undertakes other services it shall exercise reasonable skill and care and rectify any fault free of charge unless the workmanship has been disturbed. The Buyer is responsible for ensuring that the warranty on the motorcycle is not affected by the fitting of the Products. On return of any defective Products R&G shall at its option either supply a replacement or refund the purchase money but shall not be liable if the Products have been modified or used or maintained otherwise than in accordance with R&G's or manufacturer's instructions and good engineering practice or if the defect arises from accident or neglect. Other than identified above and subject to R&G not limiting its liability for causing death and personal injury, it shall not be liable for indirect or consequential loss and otherwise its liability shall be limited to the amounts paid by the Buyer for the Products or the fitting or service concerned. These terms do not affect the Buyer's statutory rights.

#### R&G RETURNS POLICY (NON-FAULTY GOODS)

Returns must be pre-authorized (if not pre-authorized the return will be rejected). Goods may only be returned direct to us if they were purchased direct from us (customer must prove if necessary). Otherwise to be returned to original vendor. Goods must be in re-sellable condition, in the opinion of R&G. All returns are subject to a 25% restocking and handling fee (25% of the gross value exc. P&P – at the prevailing price at time of purchase). The customer must pay any and all carriage charges. No returns of discontinued products, unless within 14 days of purchase. This policy does not affect your statutory rights and does not refer to faulty goods.

R&G

Unit 1, Shelley's Lane, East Worldham, Alton, Hampshire, GU34 3AQ

Tel: +44 (0)1420 89007 Fax: +44 (0)1420 87301 [www.rg-racing.com](http://www.rg-racing.com) Email: [info@rg-racing.com](mailto:info@rg-racing.com)