

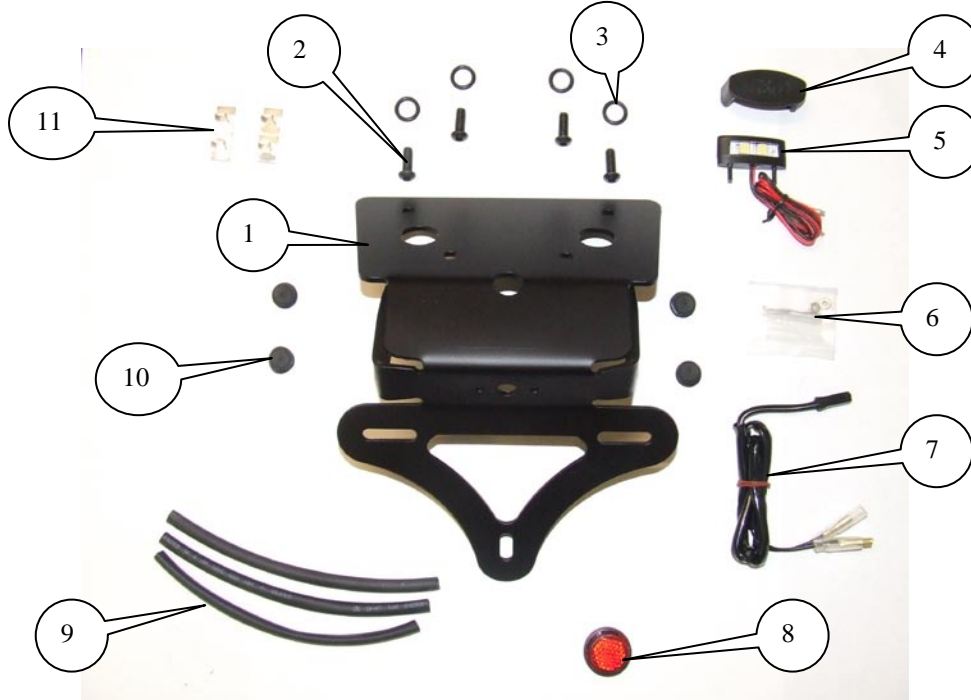


FITTING INSTRUCTIONS FOR LP0106BK LICENCE PLATE BRACKET
SUZUKI GSR750 2011



THIS KIT CONTAINS THE ITEMS PICTURED AND LABELLED BELOW.
DO NOT PROCEED UNTIL YOU ARE SURE ALL PARTS ARE PRESENT.

Please note that the way the kit is packed does not necessarily represent the way of mounting to the bike
THE PARTS SHOWN MAY BE REPRESENTATIVE ONLY (FOR CLARITY OF INSTRUCTIONS ONLY)





LEGEND

- ITEM 1 = LICENCE PLATE BRACKET (TB0106BK) (x1).
- ITEM 2 = M6x16mm LONG BUTTON HEAD BOLTS (x4).
- ITEM 3 = 'O' RINGS (No-204) (x4).
- ITEM 4 = LIGHT SHROUD (LH0004) (x1).
- ITEM 5 = LICENCE PLATE ILLUMINATOR (LA0002) (x1).
- ITEM 6 = CONNECTORS (BULLET CONNECTORS FOR LICENCE PLATE ILLUMINATOR) (x1).
- ITEM 7 = LICENCE PLATE ILLUMINATOR CONNECTION (CON006) (x1).
- ITEM 8 = REFLECTOR (x1).
- ITEM 9 = 150mm LENGTH OF HEAT SHRINK (x3).
- ITEM 10 = RUBBER BLANKING GROMMETS (RB80-30-00) (x4).
- ITEM 11 = CABLE CLIPS (x2).

Please note that in cases where kits are packed with rubber washers holding the components onto the bolt – *the rubber washers should be thrown away!*

TOOLS REQUIRED

- Set of metric Allen keys to include 4 A/F size.
- Socket set to include 10 A/F socket and wrench.
 - Electrical pliers/crimps.



PICTURE 1



PICTURE 2

FITTING INSTRUCTIONS

- REMOVE PILLION SEAT.
- UNCLIP CABLE TIDY FOR REAR LIGHT AND INDICATOR WIRING SHOWN IN PICTURE 1.
- DISCONNECT INDICATORS AND LICENCE PLATE ILLUMINATOR WIRING SOCKETS (BLACK SOCKET=RIGHT HAND INDICATOR)
(GREY SOCKET=LEFT HAND INDICATOR)
(WHITE SOCKET= LICENCE PLATE ILLUMINATOR).
- REMOVE THE FOUR BOLTS SECURING THE ORIGINAL LICENCE PLATE BRACKET AS SHOWN IN PICTURE 2 AND GENTLY LOWER WHILE ENSURING



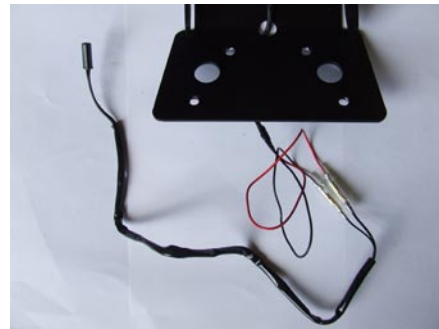
THE WIRING PLUGS DO NOT SNAG ON ITS WAY THROUGH THE ORIGINAL ROUTING.

- FIT NEW LICENCE PLATE ILLUMINATOR (ITEM 5) TO NEW LICENCE PLATE BRACKET (ITEM 1) AS SHOWN IN PICTURE 3, HEAT SHRINK IS SUPPLIED TO PROTECT THE WIRES (ITEM 9) .
- **PLEASE NOTE YOU WILL NEED TO GLUE THE LIGHT SHROUD TO THE LED LICENCE PLATE ILLUMINATOR BEFORE FITTING USING SUPER GLUE.**
- USING THE LICENCE PLATE ILLUMINATOR CONNECTION (ITEM 7), CONNECT TO THE LICENCE PLATE ILLUMINATOR AS SHOWN IN PICTURE 4 AS BELOW.

No PLATE LIGHT (ITEM 5) RED WIRE--- CONNECTOR (ITEM 7) SOLID BLACK WIRE
No PLATE LIGHT (ITEM 5) BLACK WIRE--- CONNECTOR (ITEM 7) BLACK/WHITE WIRE.



PICTURE 3



PICTURE 4



PICTURE 5



PICTURE 6

- FIT INDICATORS OF CHOICE TO THE LICENCE PLATE BRACKET, IF FITTING R&G MINI'S (PRODUCT CODE RG370) RESISTORS ARE REQUIRED (PRODUCT CODE RGR0001) THESE CAN BE FITTED USING CONNECTIONS (x2) (CON 006) TO SAVE CUTTING ORIGINAL INDICATOR WIRES.
- IF USING MINI INDICATORS OR NO INDICATORS GROMMETS (ITEM 10) ARE SUPPLIED TO BLANK OFF HOLES.
- PLACE THE FOUR 'O' RINGS (ITEM 3) OVER THE THREADED MOUNTING POSTS AS SHOWN IN PICTURE 5.

R&G Racing

Unit 1, Shelley's Lane, East Worldham, Alton, Hampshire, GU34 3AQ

Tel: +44 (0)1420 89007 Fax: +44 (0)1420 87301 www.rg-racing.com Email: info@rg-racing.com



- FEED THE LICENCE PLATE ILLUMINATOR AND INDICATOR WIRES THROUGH THE HOLE IN THE LICENCE PLATE BRACKET (SEE PICTURE 6).
- FEED THE WIRES THROUGH HOLE IN UNDER-TRAY AND ROUTE AS ORIGINAL AND RECONNECT WIRING SOCKETS. IT IS A GOOD IDEA TO TEST ALL LIGHTS AT THIS STAGE.
- USING THE FOUR M6 BUTTON HEAD BOLTS SECURE THE LICENCE PLATE BRACKET.
- REFIT THE ORIGINAL CABLE TIDY.
- REFIT PILLION SEAT.
- REFIT LICENCE PLATE (IT MAY REQUIRE DRILLING).
- **IMPORTANT: IF FITTING A FULL-SIZE LICENCE PLATE AND PLACING IT FAR DOWN ON THE LICENCE PLATE HANGER, THERE IS A SMALL CHANCE OF THE LICENCE PLATE HITTING THE BACK WHEEL UNDER HEAVY LOAD AND OVER LARGE BUMPS IN THE ROAD. IT IS YOUR RESPONSIBILITY TO CHECK FOR THIS POSSIBILITY AND TAKE AVOIDING ACTION. FAILURE TO CHECK THIS COULD RESULT IN SERIOUS INJURY.**
- DEPENDING ON LOCAL LAWS, ATTACH ENCLOSED REFLECTOR IN AN APPROPRIATE LOCATION.
- RECHECK THE LICENCE PLATE ILLUMINATOR AND ALL LIGHTS BEFORE RIDING.

ISSUE 1 20/05/2011 (NSY)

CONSUMER NOTICE

The catalogue description and any exhibition of samples are only broad indications of the Products and R&G may make design changes which do not diminish their performance or visual appeal and supplying them in such state shall conform to the order. The Buyer acknowledges no representation or warranty (other than as to title) has been given or will apply to the Products other than those in R&G's order or confirmation and the Buyer confirms it has chosen the Products as being of merchantable quality and suitable for its particular purposes. Where R&G fits the Products or undertakes other services it shall exercise reasonable skill and care and rectify any fault free of charge unless the workmanship has been disturbed. The Buyer is responsible for ensuring that the warranty on the motorcycle is not affected by the fitting of the Products. On return of any defective Products R&G shall at its option either supply a replacement or refund the purchase money but shall not be liable if the Products have been modified or used or maintained otherwise than in accordance with R&G's or manufacturer's instructions and good engineering practice or if the defect arises from accident or neglect. Other than identified above and subject to R&G not limiting its liability for causing death and personal injury, it shall not be liable for indirect or consequential loss and otherwise its liability shall be limited to the amounts paid by the Buyer for the Products or the fitting or service concerned. These terms do not affect the Buyer's statutory rights.

R&G RACING RETURNS POLICY (NON-FAULTY GOODS)

Returns must be pre-authorized (if not pre-authorized the return will be rejected). Goods may only be returned direct to us if they were purchased direct from us (customer must prove if necessary). Otherwise to be returned to original vendor. Goods must be in resellable condition, in the opinion of R&G Racing. All returns are subject to a 25% restocking and handling fee (25% of the gross value exc. P&P – at the prevailing price at time of purchase). The customer must pay any and all carriage charges. No returns of discontinued products, unless within 14 days of purchase. This policy does not affect your statutory rights and does not refer to faulty goods.

R&G Racing

Unit 1, Shelley's Lane, East Worldham, Alton, Hampshire, GU34 3AQ

Tel: +44 (0)1420 89007 Fax: +44 (0)1420 87301 www.rg-racing.com Email: info@rg-racing.com



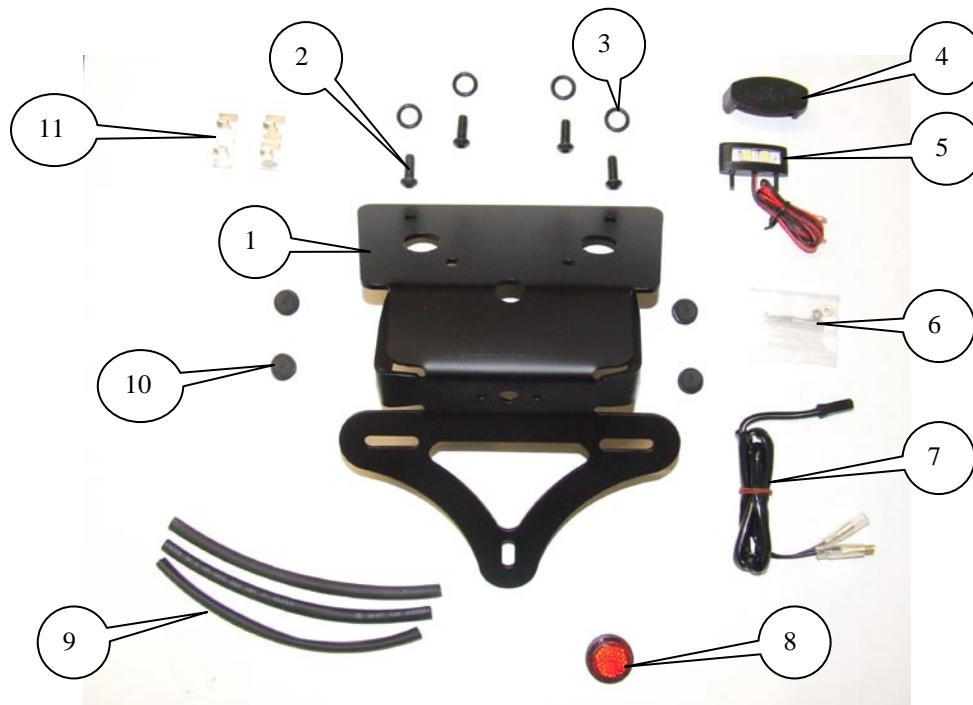
**INSTRUCTIONS DE MONTAGE POUR LP0106BK SUPPORT PLAQUE
D'IM, MATRICULATION**

SUZUKI GSR750 2011



Verifier le contenu de la boite avant de deballer les pieces

La façon dont le kit est emballé ne représente pas nécessairement la façon de le monter sur la moto





LEGENDE

- POINT 1 = SUPPORT DE PLAQUE D'IMMATRICULATION (TB0106BK) (x1).
POINT 2 M6x16mm = longueur boulons à tête (x4).
POINT 3 = ANNEAUX (n-204) (x4).
POINT 4 = ENVELOPPE DE LUMIERE (LH0004) (x1).
POINT 5 ILLUMINATEUR = PLAQUE D'IMMATRICULATION (LA0002) (x1).
POINT 6 = CONNECTEURS (connecteurs coniques pour éclairage PLAQUE D'IMMATRICULATION) (x1).
POINT 7 = CONNEXION PLAQUE LICENCE D'ÉCLAIRAGE (CON006) (x1).
POINT 8 REFLECTEUR = (x1).
POINT 9 = 150mm LONGUEUR DE THERMORÉTRACTILE (x3).
POINT 10 = GROMMETS SUPPRESSION DE CAOUTCHOUC (RB80-30-00) (x4).
POINT 11 = CLIPS CABLE = (x2).

Notez que dans les cas où les kits sont emballés avec des rondelles en caoutchouc, composantes du boulon - les rondelles en caoutchouc doivent être jetées !

OUTILS REQUIS

- Jeu de clés Allen métriques d'inclure 4 A / F.
- Prise définie afin d'inclure 10 A socket F.
- une pince électrique / sertissages.



Image 1



Image 2

INSTRUCTIONS DE MONTAGE

- Retirez siège du passager.
- CABLE déclipser · rangée pour feu arrière et CÂBLAGE indicateur représenté dans la figure 1.
- Débranchez INDICATEURS ET PRISES DE PLAQUE D'ÉCLAIRAGE (prise noire =

R&G Racing

Unit 1, Shelley's Lane, East Worldham, Alton, Hampshire, GU34 3AQ

Tel: +44 (0)1420 89007 Fax: +44 (0)1420 87301 www.rg-racing.com Email: info@rg-racing.com



INDICATEUR DE DROITE) (SOCKET GRIS = clignotant gauche) (prise blanche = ECLAIRAGE DE PLAQUE D'IMMATRICULATION).

· Retirez les quatre boulons de fixation et LE SUPPORT DE PLAQUE ORIGINAL voir figure 2 et abaissez doucement tout en vous assurant que les prises de câblage n'accrochent rien.

· Mettre en place le nouvel ECLAIRAGE DE PLAQUE D'IMMATRICULATION (point 5), le nouveau SUPPORT DE PLAQUE (POINT 1) Comme indiqué dans la photo 3, le THERMORÉTRACTILE est fourni pour protéger les fils (point 9).

· VOUS AUREZ BESOIN DE COLLE POUR LA LUMIERE ET LA PLAQUE D'IMMATRICULATION

· UTILISATION DE LA CONNEXION PLAQUE D'IMMATRICULATION ILLUMINATEUR (point 7), se connecter a L' ECLAIRAGE DE PLAQUE D'IMMATRICULATION COMME INDIQUE SUR LA PHOTO 4 ci-dessous.

Aucun ECLAIRAGE DE PLAQUE (ITEM 5) FIL ROUGE --- connecteur (article 7) SOLIDE FIL NOIR

Aucun ECLAIRAGE DE PLAQUE (ITEM 5) FIL NOIR --- connecteur (article 7) fil noir / blanc.



Image 3

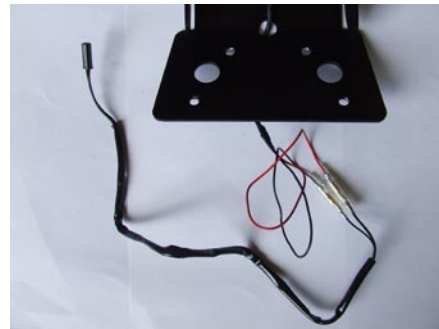


Image 4



Image 5

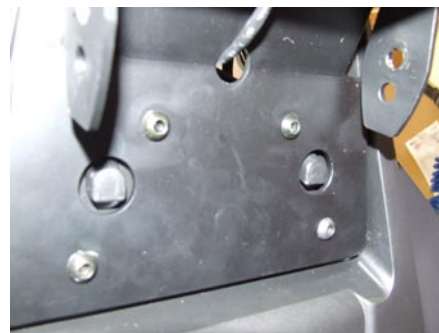


Image 6

INDICATEURS FIT · DE CHOIX POUR LE SUPPORT DE PLAQUE D'IMMATRICULATION, SI MONTAGE R&G (code de produit RG370)

R&G Racing

Unit 1, Shelley's Lane, East Worldham, Alton, Hampshire, GU34 3AQ

Tel: +44 (0)1420 89007 Fax: +44 (0)1420 87301 www.rg-racing.com Email: info@rg-racing.com



DES MINI RÉSISTANCES sont nécessaires (RGR0001 CODE DU PRODUIT) Ils peuvent être EQUIPEES de connexions (x2) (CON 006) POUR garder le COUPE FILS indicateur original.

· LORSQUE LES CLIGNOTANTS sont fournis à TROUS BLANC OFF.

LIEU · Les quatre anneaux (POINT 3) sur les tiges filetéés de fixation comme illustré dans la photo 5. .

° PASSER L'ÉCLAIRAGE DE PLAQUE D'IMMATRICULATION ET FILS INDICATEUR PAR LE TROU DANS LE SUPPORT DE PLAQUE D'IMMATRICULATION (voir figure 6).

° PASSER LES FILS DANS LE TROU COMME ORIGINAL ET RECONNECTER LES PRISES DE CÂBLAGE.

A CE STADE, TESTER TOUS LES FEUX.

· UTILISATION DE LA M6 quatre boulons à tête BOUTON SECURE THE SUPPORT DE PLAQUE LICENCE.

· REFIT le câble d'origine TIDY.

· Reinstaller siege passager.

· Installer la nouvelle plaque (IT doivent parfois percer).

· IMPORTANT: Si vous installez une assiette pleine, veuillez a bien controler qu'il n'y ai aucun frottemen, prendre des mesures pour éviter cela. Des blessures graves pourraient etre engendrees.

ISSUE 1 20/05/2011 (NSY)

CONSUMER NOTICE

The catalogue description and any exhibition of samples are only broad indications of the Products and R&G may make design changes which do not diminish their performance or visual appeal and supplying them in such state shall conform to the order. The Buyer acknowledges no representation or warranty (other than as to title) has been given or will apply to the Products other than those in R&G's order or confirmation and the Buyer confirms it has chosen the Products as being of merchantable quality and suitable for its particular purposes. Where R&G fits the Products or undertakes other services it shall exercise reasonable skill and care and rectify any fault free of charge unless the workmanship has been disturbed. The Buyer is responsible for ensuring that the warranty on the motorcycle is not affected by the fitting of the Products. On return of any defective Products R&G shall at its option either supply a replacement or refund the purchase money but shall not be liable if the Products have been modified or used or maintained otherwise than in accordance with R&G's or manufacturer's instructions and good engineering practice or if the defect arises from accident or neglect. Other than identified above and subject to R&G not limiting its liability for causing death and personal injury, it shall not be liable for indirect or consequential loss and otherwise its liability shall be limited to the amounts paid by the Buyer for the Products or the fitting or service concerned. These terms do not affect the Buyer's statutory rights.

R&G RACING RETURNS POLICY (NON-FAULTY GOODS)

Returns must be pre-authorized (if not pre-authorized the return will be rejected). Goods may only be returned direct to us if they were purchased direct from us (customer must prove if necessary). Otherwise to be returned to original vendor. Goods must be in resellable condition, in the opinion of R&G Racing. All returns are subject to a 25% restocking and handling fee (25% of the gross value exc. P&P – at the prevailing price at time of purchase). The customer must pay any and all carriage charges. No returns of discontinued products, unless within 14 days of purchase. This policy does not affect your statutory rights and does not refer to faulty goods.

R&G Racing

Unit 1, Shelley's Lane, East Worldham, Alton, Hampshire, GU34 3AQ

Tel: +44 (0)1420 89007 Fax: +44 (0)1420 87301 www.rg-racing.com Email: info@rg-racing.com

